

SINALOA

## ---RED FEDERAL LIBRE---

1 Culiacán - Los Mochis	MEX-015
2 Durango - Villa Unión	MEX-040
3 Libramiento de Mazatlán	MEX-015
4 Libramiento Sur de Culiacán	MEX-015
5 Mazatlán - Culiacán	MEX-015
6 Pericos - Los Naranjos	MEX-024
7 Tepic - Mazatlán	MEX-015

## ---RED FEDERAL DE CUOTA---

8 Durango - Mazatlán (Cuota)	MEX-040D
9 Libramiento de Culiacán (Cuota)	MEX-015D
10 Libramiento de Mazatlán (Cuota)	MEX-015D
11 Los Mochis - Cd. Obregón (Cuota)	MEX-015D
12 Mazatlán - Culiacán (Cuota)	MEX-015D
13 Tepic - Villa Unión (cuota)	MEX-015D

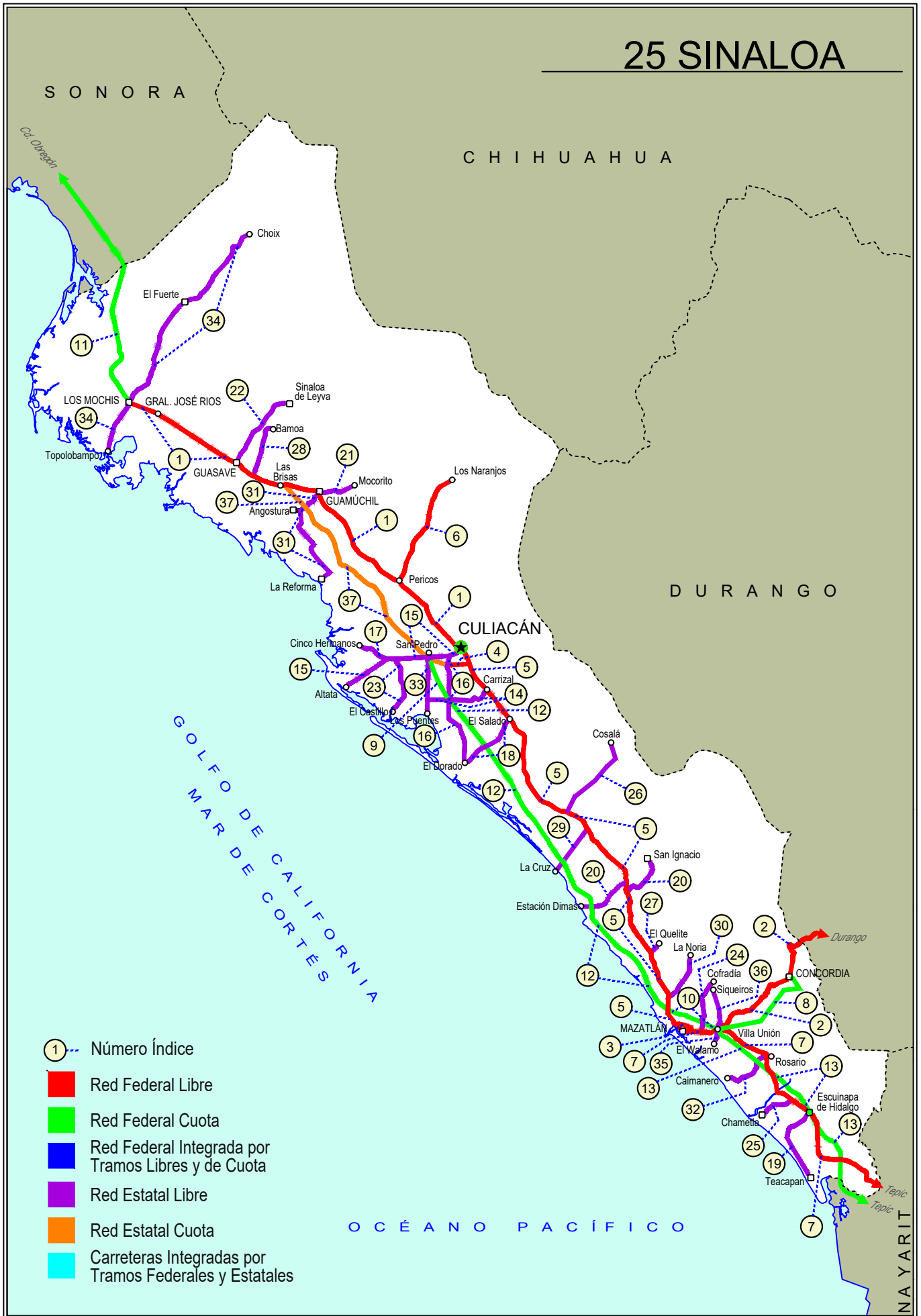
## ---RED ESTATAL LIBRE---

14 Carrizal - Campo Anibal	SIN-019
15 Culiacán - Altata	SIN-030
16 Culiacán - El Dorado	SIN-005
17 El Limoncito - Cinco Hermanos	SIN-016
18 El Salado - El Dorado	SIN-010
19 Escuinapa de Hidalgo - Teacapan	SIN-001
20 Estación Dimas - San Ignacio	SIN-006
21 Guamuchil - Mocerito	SIN-021
22 Guasave - Sinaloa de Leyva	SIN-023
23 Navolato - El Castillo	SIN-004
24 Pozole - Cofradía	SIN-080
25 Ramal a Chametla	SIN-002
26 Ramal a Cosalá	SIN-008
27 Ramal a El Quelite	SIN-060
28 Ramal a Estación Bamoá	SIN-022
29 Ramal a La Cruz	SIN
30 Ramal a La Noria	SIN
31 Ramal a La Reforma	SIN-004
32 Rosario - Caimanero	SIN-003
33 San Pedro - Campo Aníbal	SIN
34 Topolobampo - Choix	SIN-023
35 Villa Unión - El Walamo	SIN-081
36 Villa Unión - Siqueiros	SIN-063

## ---RED ESTATAL DE CUOTA---

37 Culiacán - Las Brisas (Cuota)	SIN-001D
----------------------------------	----------

# 25 SINALOYA





SINALOA

1 CARR: Culiacán - Los Mochis

CLAVE: 25502

RUTA: MEX-015

AÑO: 2025

LUGAR	ESTACION				CLASIFICACION VEHICULAR EN PORCIENTO										COORDENADAS					
	KM	TE	SC	TDPA	M	A	B	C2	C3	T3S2	T3S3	T3S2R4	OTROS	A	B	C	K'	D	LATITUD	LONGITUD
Culiacán	0.00																			
T. Der. Los Monzones	4.00	1	1	12366	4.8	83.8	1.4	4.6	1.6	2.1	0.9	0.6	0.2	88.6	1.4	10.0	0.100	0.707	24.829819	-107.428500
T. Der. Los Monzones	4.00	1	2	14466	4.9	83.4	1.4	4.7	1.7	2.2	1.0	0.6	0.1	88.3	1.4	10.3	0.116	0.707	24.829725	-107.428630
Plaza de Cobro Puente Culiacán	22.00	2	1	2834	1.2	88.6	2.9	3.0	1.5	2.0	0.3	0.3	0.2	89.8	2.9	7.3	0.084	0.500	24.948949	-107.545695
Plaza de Cobro Puente Culiacán	22.00	2	2	2834	1.2	88.6	2.9	3.0	1.5	2.0	0.3	0.3	0.2	89.8	2.9	7.3	0.084	0.500	24.948949	-107.545695
T. Der. Presa López Mateos	27.20	3	0	6628	4.4	86.1	1.9	2.9	1.4	2.0	0.6	0.6	0.1	90.5	1.9	7.6	0.131	0.794	24.995104	-107.574081
X. C. Pericos - Los Naranjos	43.60	3	0	5339	2.2	84.5	2.9	3.1	1.5	3.2	1.2	0.8	0.6	86.7	2.9	10.4	0.115	0.782	25.093833	-107.698416
Guamuchil	104.70	1	0	10297	5.2	83.6	1.3	2.9	2.1	3.3	0.9	0.4	0.3	88.8	1.3	9.9	0.085	0.511	25.427229	-108.057485
Guamuchil	104.70	3	1	9349	9.4	78.4	3.1	3.9	1.8	1.6	0.8	0.7	0.3	87.8	3.1	9.1	0.082	0.522	25.470124	-108.099381
Guamuchil	104.70	3	2	10016	9.3	78.8	2.9	3.6	2.0	1.7	0.7	0.7	0.3	88.1	2.9	9.0	0.083	0.522	25.469992	-108.099375
T. Izq. Aut. Culiacán - Las Brisas	121.20	1	0	6409	3.0	83.9	3.7	2.2	1.7	3.6	1.0	0.8	0.1	86.9	3.7	9.4	0.089	0.521	25.489728	-108.225399
T. Izq. Aut. Culiacán - Las Brisas	121.20	3	1	6503	4.2	63.5	5.9	4.0	2.3	14.5	2.0	2.6	1.0	67.7	5.9	26.4	0.080	0.530	25.486707	-108.253180
T. Izq. Aut. Culiacán - Las Brisas	121.20	3	2	6655	3.9	63.2	5.9	4.0	2.3	14.9	2.3	2.5	1.0	67.1	5.9	27.0	0.081	0.530	25.486619	-108.253173
T. Der. Estación Bamoa	133.17	3	1	6819	4.4	66.0	5.4	3.8	3.1	11.2	1.9	3.3	0.9	70.4	5.4	24.2	0.070	0.545	25.519024	-108.361427
T. Der. Estación Bamoa	133.17	3	2	7676	4.6	65.8	5.3	4.1	2.9	11.6	1.8	3.1	0.8	70.4	5.3	24.3	0.074	0.545	25.518193	-108.359755
Plaza de Cobro Puente Sinaloa	136.00	2	1	5786	0.6	61.7	4.1	3.9	3.4	18.3	1.9	4.9	1.2	62.3	4.1	33.6	0.084	0.500	25.512854	-108.347613
Plaza de Cobro Puente Sinaloa	136.00	2	2	5786	0.6	61.7	4.1	3.9	3.4	18.3	1.9	4.9	1.2	62.3	4.1	33.6	0.084	0.500	25.512854	-108.347613
Guasave	146.28	3	1	12808	9.8	68.9	3.4	4.1	2.2	8.5	1.0	1.7	0.4	78.7	3.4	17.9	0.074	0.509	25.590440	-108.493961
Guasave	146.28	3	2	10826	9.9	68.5	3.2	3.9	2.5	8.7	1.2	1.6	0.5	78.4	3.2	18.4	0.079	0.509	25.590425	-108.494106
T. Der. Estación Naranja	155.88	3	1	10543	7.6	68.8	3.4	2.8	5.7	6.5	1.2	3.1	0.9	76.4	3.4	20.2	0.072	0.507	25.622509	-108.554094
T. Der. Estación Naranja	155.88	3	2	9254	7.4	69.4	3.5	2.7	5.5	6.5	1.2	3.0	0.8	76.8	3.5	19.7	0.081	0.507	25.622436	-108.554132
T. Izq. Los Mochis (1º Acceso)	201.97	1	1	14627	5.0	72.3	4.3	4.2	2.8	7.9	1.3	1.8	0.4	77.3	4.3	18.4	0.077	0.511	25.808330	-108.956696
T. Izq. Los Mochis (1º Acceso)	201.97	1	2	14574	5.3	72.2	4.1	4.2	2.5	7.7	1.4	2.1	0.5	77.5	4.1	18.4	0.075	0.511	25.808327	-108.956819
T. Izq. Los Mochis (1º Acceso)	201.97	3	1	13873	5.8	70.0	3.9	4.6	3.6	7.2	1.8	2.3	0.8	75.8	3.9	20.3	0.078	0.528	25.821231	-108.964391
T. Izq. Los Mochis (1º Acceso)	201.97	3	2	13398	7.4	67.3	4.2	4.5	4.6	7.4	2.0	2.0	0.6	74.7	4.2	21.1	0.083	0.528	25.821148	-108.964453
T. C. Topolobampo - Choix	205.21																			

2 CARR: Durango - Villa Unión

CLAVE: 0083

RUTA: MEX-040

AÑO: 2025

LUGAR	ESTACION				CLASIFICACION VEHICULAR EN PORCIENTO										COORDENADAS					
	KM	TE	SC	TDPA	M	A	B	C2	C3	T3S2	T3S3	T3S2R4	OTROS	A	B	C	K'	D	LATITUD	LONGITUD
Durango	0.00	3	0	3886	6.8	75.4	2.3	4.5	2.8	4.8	2.8	0.5	0.1	82.2	2.3	15.5	0.103	0.550	23.995145	-104.732744
T. Der. Pino	22.86	3	0	2064	5.6	76.1	2.7	3.7	3.1	5.5	3.0	0.2	0.1	81.7	2.7	15.6	0.102	0.697	23.967248	-104.820317
T. Izq. Estación Navíos	58.42	3	0	2144	5.6	75.0	2.4	3.8	3.7	5.0	2.6	1.6	0.3	80.6	2.4	17.0	0.095	0.574	23.896765	-105.051124
Llano Grande	77.23	1	0	1885	9.0	71.5	2.7	4.5	3.2	5.0	3.2	0.7	0.2	80.5	2.7	16.8	0.116	0.734	23.866650	-105.199261

SINALOA

2 CARR : Durango - Villa Unión

CLAVE: 0083

RUTA: MEX-040

AÑO: 2025

LUGAR	ESTACION				CLASIFICACION VEHICULAR EN PORCIENTO										COORDENADAS					
	KM	TE	SC	TDPA	M	A	B	C2	C3	T3S2	T3S3	T3S2R4	OTROS	A	B	C	K'	D	LATITUD	LONGITUD
El Salto	99.76	1	0	2556	8.6	80.8	1.6	3.7	2.6	1.3	0.9	0.4	0.1	89.4	1.6	9.0	0.092	0.513	23.805450	-105.338377
El Salto	99.76	3	0	1999	6.9	83.9	1.4	3.8	2.1	0.9	0.3	0.6	0.1	90.8	1.4	7.8	0.091	0.577	23.784340	-105.375996
Las Adjuntas	119.00	1	0	1687	4.4	76.9	3.4	9.1	2.3	1.8	1.6	0.4	0.1	81.3	3.4	15.3	0.110	0.551	23.725118	-105.491263
La Ciudad	145.50	1	0	1325	11.5	78.0	1.7	5.3	1.8	1.0	0.3	0.3	0.1	89.5	1.7	8.8	0.109	0.510	23.731788	-105.674620
La Ciudad	145.50	3	0	665	35.0	56.2	1.6	3.3	2.2	0.9	0.4	0.4	0.0	91.2	1.6	7.2	0.108	0.569	23.727247	-105.691805
Lim. Edos. Term. Dgo. Ppia. Sin.	198.50																			
Concordia	273.50	1	0	1728	15.3	67.7	2.9	2.8	3.6	3.7	3.6	0.4	0.0	83.0	2.9	14.1	0.108	0.524	23.292790	-106.051904
T. C. Tepic - Mazatlán	294.40	1	0	4121	9.0	76.7	4.0	3.7	2.0	2.7	1.4	0.4	0.1	85.7	4.0	10.3	0.076	0.502	23.204792	-106.197832

3 CARR : Libramiento de Mazatlán

CLAVE: 25604

RUTA: MEX-015

AÑO: 2025

LUGAR	ESTACION				CLASIFICACION VEHICULAR EN PORCIENTO										COORDENADAS					
	KM	TE	SC	TDPA	M	A	B	C2	C3	T3S2	T3S3	T3S2R4	OTROS	A	B	C	K'	D	LATITUD	LONGITUD
T. C. Tepic - Mazatlán	0.00	3	1	35539	8.8	81.0	1.9	3.4	2.0	1.6	0.2	0.6	0.5	89.8	1.9	8.3	0.086	0.518	23.237849	-106.389951
T. C. Tepic - Mazatlán	0.00	3	2	35989	8.9	81.1	2.0	3.3	2.1	1.5	0.2	0.5	0.4	90.0	2.0	8.0	0.085	0.518	23.237838	-106.390080
T. C. Mazatlán - Culiacán	5.40	1	1	22572	10.9	80.5	1.4	3.6	1.3	1.0	0.3	0.8	0.2	91.4	1.4	7.2	0.067	0.508	23.260828	-106.410531
T. C. Mazatlán - Culiacán	5.40	1	2	22097	11.0	80.5	1.5	3.7	1.2	0.9	0.3	0.7	0.2	91.5	1.5	7.0	0.072	0.508	23.260735	-106.410617

4 CARR : Libramiento Sur de Culiacán

CLAVE: 25500

RUTA: MEX-015

AÑO: 2025

LUGAR	ESTACION				CLASIFICACION VEHICULAR EN PORCIENTO										COORDENADAS					
	KM	TE	SC	TDPA	M	A	B	C2	C3	T3S2	T3S3	T3S2R4	OTROS	A	B	C	K'	D	LATITUD	LONGITUD
T. C. Mazatlán - Culiacán	0.00	3	1	19514	3.6	87.5	1.5	2.6	2.2	1.9	0.2	0.4	0.1	91.1	1.5	7.4	0.081	0.526	24.752682	-107.361476
T. C. Mazatlán - Culiacán	0.00	3	2	19100	3.3	86.8	1.7	2.8	2.3	2.0	0.5	0.4	0.2	90.1	1.7	8.2	0.078	0.526	24.752866	-107.359956
T. C. Culiacán - El Dorado	8.90	1	1	22506	4.2	86.7	1.2	2.0	2.5	2.2	0.3	0.7	0.2	90.9	1.2	7.9	0.100	0.585	24.742906	-107.442448
T. C. Culiacán - El Dorado	8.90	1	2	21168	3.9	86.8	1.3	2.0	2.4	2.3	0.4	0.7	0.2	90.7	1.3	8.0	0.085	0.585	24.742833	-107.442480

5 CARR : Mazatlán - Culiacán

CLAVE: 25501

RUTA: MEX-015

AÑO: 2025

LUGAR	ESTACION				CLASIFICACION VEHICULAR EN PORCIENTO										COORDENADAS					
	KM	TE	SC	TDPA	M	A	B	C2	C3	T3S2	T3S3	T3S2R4	OTROS	A	B	C	K'	D	LATITUD	LONGITUD
Mazatlán	0.00																			
T. Der. Libramiento de Mazatlán Libre	0.82	1	1	30327	9.5	80.9	2.2	4.0	1.6	0.8	0.3	0.5	0.2	90.4	2.2	7.4	0.076	0.511	23.259853	-106.417922
T. Der. Libramiento de Mazatlán Libre	0.82	1	2	29256	9.6	80.2	2.3	4.1	1.7	0.9	0.4	0.6	0.2	89.8	2.3	7.9	0.080	0.511	23.259139	-106.418189
X. Libramiento de Mazatlán Cuota	5.00	1	0	7852	1.9	82.1	1.6	8.6	2.4	1.9	0.7	0.7	0.1	84.0	1.6	14.4	0.079	0.531	23.303464	-106.402178

SINALOA

5 CARR: Mazatlán - Culiacán

CLAVE: 25501

RUTA: MEX-015

AÑO: 2025

LUGAR	ESTACION				CLASIFICACION VEHICULAR EN PORCIENTO													COORDENADAS		
	KM	TE	SC	TDPA	M	A	B	C2	C3	T3S2	T3S3	T3S2R4	OTROS	A	B	C	K'	D	LATITUD	LONGITUD
T. Der. La Noria	10.92	1	0	8670	7.8	77.6	1.4	8.3	2.2	2.1	0.5	0.1	0.0	85.4	1.4	13.2	0.079	0.571	23.344443	-106.414333
T. Der. La Noria	10.92	3	0	4842	6.3	78.2	2.2	8.3	2.0	2.2	0.6	0.1	0.1	84.5	2.2	13.3	0.083	0.505	23.356480	-106.415963
T. Izq. Playa Los Cerritos	11.08	3	0	4813	5.3	77.6	2.3	9.1	1.9	2.8	0.7	0.2	0.1	82.9	2.3	14.8	0.087	0.590	23.362975	-106.420570
T. Der. El Quelite	33.00	1	0	4096	7.2	72.9	2.2	9.3	2.9	4.6	0.6	0.2	0.1	80.1	2.2	17.7	0.084	0.627	23.527058	-106.500469
T. Der. El Quelite	33.00	3	0	2660	5.8	70.5	4.2	8.8	2.9	5.8	1.4	0.5	0.1	76.3	4.2	19.5	0.092	0.638	23.538109	-106.510943
X. C. Estación Dimas - San Ignacio	66.77	1	0	2425	5.5	74.8	3.5	5.5	2.6	6.6	1.2	0.2	0.1	80.3	3.5	16.2	0.078	0.561	23.785472	-106.608099
X. C. Estación Dimas - San Ignacio	66.77	3	0	3042	6.4	73.4	2.8	9.0	3.2	4.1	1.0	0.1	0.0	79.8	2.8	17.4	0.102	0.511	23.795354	-106.612605
T. Izq. Estación Dimas	73.96	3	0	2753	5.2	72.8	3.6	8.7	2.8	5.2	1.4	0.2	0.1	78.0	3.6	18.4	0.100	0.516	23.841044	-106.614311
T. Der. Elota	91.92	3	0	2805	4.2	75.5	3.3	8.0	2.2	5.3	1.3	0.1	0.1	79.7	3.3	17.0	0.103	0.645	23.965801	-106.723856
T. Izq. La Cruz	105.21	3	0	3879	6.6	74.9	2.3	7.9	2.6	4.8	0.8	0.1	0.0	81.5	2.3	16.2	0.083	0.537	24.057872	-106.798545
El Salado	175.24	1	0	7879	6.8	82.0	1.9	3.7	1.8	2.2	0.8	0.7	0.1	88.8	1.9	9.3	0.073	0.541	24.502015	-107.156133
El Salado	175.24	3	0	7989	3.7	83.6	2.3	4.1	1.6	2.6	1.4	0.6	0.1	87.3	2.3	10.4	0.087	0.514	24.514473	-107.166608
T. Izq. Libramiento de Culiacán	210.40	1	1	8013	5.2	86.3	1.4	4.1	1.3	1.0	0.2	0.4	0.1	91.5	1.4	7.1	0.108	0.569	24.747474	-107.353935
T. Izq. Libramiento de Culiacán	210.40	1	2	8848	4.8	86.2	1.5	4.2	1.6	1.2	0.1	0.3	0.1	91.0	1.5	7.5	0.115	0.569	24.747427	-107.354050
Culiacán	215.30																			

6 CARR: Pericos - Los Naranjos

CLAVE: 25598

RUTA: MEX-024

AÑO: 2025

LUGAR	ESTACION				CLASIFICACION VEHICULAR EN PORCIENTO													COORDENADAS		
	KM	TE	SC	TDPA	M	A	B	C2	C3	T3S2	T3S3	T3S2R4	OTROS	A	B	C	K'	D	LATITUD	LONGITUD
Pericos	0.00	3	0	3313	6.9	84.3	1.1	3.8	2.7	0.9	0.2	0.1	0.0	91.2	1.1	7.7	0.085	0.604	25.096010	-107.683595
Badiraguato	37.50	1	0	2363	14.6	79.5	0.8	1.8	2.0	0.6	0.5	0.2	0.0	94.1	0.8	5.1	0.085	0.624	25.341695	-107.559380
Naranjos	66.00																			

7 CARR: Tepic - Mazatlán

CLAVE: 00499

RUTA: MEX-015

AÑO: 2025

LUGAR	ESTACION				CLASIFICACION VEHICULAR EN PORCIENTO													COORDENADAS		
	KM	TE	SC	TDPA	M	A	B	C2	C3	T3S2	T3S3	T3S2R4	OTROS	A	B	C	K'	D	LATITUD	LONGITUD
Tepic (Baja)	0.00	3	1	8480	7.5	86.0	0.6	3.9	1.5	0.1	0.2	0.1	0.1	93.5	0.6	5.9	0.078	0.517	21.511966	-104.905765
Tepic (Alta)	0.00	3	1	11417	6.2	87.2	0.5	3.4	1.2	0.8	0.3	0.3	0.1	93.4	0.5	6.1	0.075	0.517	21.511908	-104.905865
Tepic (Alta)	0.00	3	2	12514	6.0	87.7	0.5	3.0	1.2	0.8	0.3	0.4	0.1	93.7	0.5	5.8	0.077	0.517	21.511856	-104.905898
Tepic (Baja)	0.00	3	2	8631	7.5	86.6	0.5	3.3	1.5	0.1	0.3	0.1	0.1	94.1	0.5	5.4	0.076	0.517	21.511764	-104.905938
T. Izq. Libramiento de Tepic (Baja)	2.56	1	1	9882	10.6	83.8	0.5	3.0	1.6	0.2	0.2	0.1	0.0	94.4	0.5	5.1	0.077	0.516	21.521483	-104.922673
T. Izq. Libramiento de Tepic (Alta)	2.56	1	1	9470	2.9	95.4	0.1	0.9	0.3	0.1	0.1	0.2	0.0	98.3	0.1	1.6	0.083	0.516	21.521393	-104.922710
T. Izq. Libramiento de Tepic (Baja)	2.56	1	2	8778	10.5	84.6	0.3	2.9	1.1	0.3	0.1	0.2	0.0	95.1	0.3	4.6	0.080	0.516	21.521268	-104.922823

SINALOA

7 CARR: Tepic - Mazatlán

CLAVE: 00499

RUTA: MEX-015

AÑO: 2025

LUGAR	ESTACION				CLASIFICACION VEHICULAR EN PORCIENTO													COORDENADAS		
	KM	TE	SC	TDPA	M	A	B	C2	C3	T3S2	T3S3	T3S2R4	OTROS	A	B	C	K'	D	LATITUD	LONGITUD
T. Izq. Libramiento de Tepic (Alta)	2.56	1	2	10431	3.6	95.1	0.1	0.4	0.4	0.2	0.1	0.1	0.0	98.7	0.1	1.2	0.079	0.516	21.521354	-104.922778
T. Izq. Aut. Tepic-Villa Unión (Cuota)	3.70	3	0	7192	6.6	80.0	2.2	3.1	1.9	4.3	1.2	0.6	0.1	86.6	2.2	11.2	0.081	0.752	21.536142	-104.932400
Los Otates	19.80	3	0	5093	2.8	73.7	4.9	6.8	2.9	5.5	1.7	1.5	0.2	76.5	4.9	18.6	0.083	0.703	21.641805	-104.973264
T. Izq. Jumatán	28.52	1	0	4209	3.7	77.1	2.4	3.5	3.6	6.7	2.2	0.7	0.1	80.8	2.4	16.8	0.067	0.669	21.669833	-105.023809
T. Izq. Jumatán	28.52	3	1	7457	6.0	71.2	3.9	3.8	2.4	7.4	1.3	3.3	0.7	77.2	3.9	18.9	0.082	0.573	21.667956	-105.030477
T. Izq. Jumatán	28.52	3	2	8101	6.2	70.3	3.9	4.1	2.7	7.4	1.1	3.4	0.9	76.5	3.9	19.6	0.078	0.573	21.667966	-105.029645
T. Izq. San Blas	33.54	1	1	8295	4.5	75.1	2.8	3.1	1.8	9.1	0.6	2.6	0.4	79.6	2.8	17.6	0.093	0.609	21.679328	-105.042458
T. Izq. San Blas	33.54	1	2	7316	4.3	75.0	3.0	3.3	1.6	8.5	1.0	3.0	0.3	79.3	3.0	17.7	0.078	0.609	21.679397	-105.042891
T. Izq. San Blas	33.54	3	1	7421	3.0	67.0	5.8	3.7	2.8	12.4	1.6	3.0	0.7	70.0	5.8	24.2	0.092	0.537	21.704586	-105.055298
T. Izq. San Blas	33.54	3	2	7065	2.7	68.8	5.5	1.3	2.5	13.5	2.2	3.0	0.5	71.5	5.5	23.0	0.081	0.537	21.704537	-105.055420
T. Izq. Villa Hidalgo	48.12	1	0	9615	6.4	72.5	2.9	3.4	3.9	8.2	1.7	0.4	0.6	78.9	2.9	18.2	0.086	0.640	21.806574	-105.102537
T. Izq. Villa Hidalgo	48.12	3	0	7704	6.7	71.9	5.4	3.9	2.3	7.3	2.3	0.1	0.1	78.6	5.4	16.0	0.083	0.544	21.811914	-105.107308
T. Izq. Santiago Ixcuintla	56.42	1	0	8048	5.2	73.8	5.0	3.3	3.0	7.2	1.9	0.5	0.1	79.0	5.0	16.0	0.083	0.558	21.853109	-105.151156
T. Izq. Santiago Ixcuintla	56.42	3	0	7503	4.0	76.7	4.2	3.6	2.7	6.9	1.5	0.4	0.0	80.7	4.2	15.1	0.076	0.536	21.859148	-105.155991
T. Izq. Tuxpan	70.60	1	0	8659	5.0	76.8	3.7	3.3	2.7	6.0	1.5	0.6	0.4	81.8	3.7	14.5	0.073	0.540	21.944208	-105.215499
T. Izq. Tuxpan	70.60	3	0	7397	9.3	69.1	4.3	3.4	4.1	7.3	1.8	0.6	0.1	78.4	4.3	17.3	0.074	0.566	21.962163	-105.221691
T. Der. Rosamorada	90.70	3	0	6338	6.9	56.8	6.3	8.9	4.1	13.1	3.2	0.4	0.3	63.7	6.3	30.0	0.067	0.531	22.128937	-105.221231
Tierra Generosa	110.40	1	0	2984	8.1	53.2	6.6	7.6	4.3	12.4	4.2	2.8	0.8	61.3	6.6	32.1	0.071	0.596	22.293514	-105.272928
T. Der. Acaponeta	136.52	1	0	8373	10.0	68.0	4.5	3.1	2.6	8.9	2.4	0.3	0.2	78.0	4.5	17.5	0.078	0.547	22.483402	-105.384323
T. Der. Acaponeta	136.52	3	0	5894	10.4	63.3	5.1	4.1	3.7	9.1	3.2	0.8	0.3	73.7	5.1	21.2	0.070	0.540	22.492611	-105.384004
Lim. Edos. Term. Nay. Ppia. Sin.	144.60																			
T. Der. Villa Unión (Cuota)	193.60	1	1	4213	6.3	47.9	9.0	5.3	2.6	20.9	3.4	3.6	1.0	54.2	9.0	36.8	0.069	0.534	22.802205	-105.717344
T. Der. Villa Unión (Cuota)	193.60	1	2	4424	6.1	48.5	9.4	4.9	2.1	21.0	3.3	3.8	0.9	54.6	9.4	36.0	0.072	0.534	22.802113	-105.717420
Escuinapa de Hidalgo	200.00	1	0	4833	13.0	64.0	4.2	4.1	3.2	8.4	2.4	0.6	0.1	77.0	4.2	18.8	0.073	0.520	22.832576	-105.760532
Escuinapa de Hidalgo	200.00	3	0	6036	6.9	69.6	6.6	3.8	2.3	8.3	2.1	0.2	0.2	76.5	6.6	16.9	0.079	0.520	22.846987	-105.792000
Rosario	221.71	1	0	11330	15.8	69.9	3.5	2.3	2.2	4.6	1.6	0.1	0.0	85.7	3.5	10.8	0.075	0.501	22.997037	-105.851675
Rosario	221.71	3	0	7040	7.9	73.7	3.4	3.5	2.1	6.8	1.7	0.7	0.2	81.6	3.4	15.0	0.079	0.528	23.003186	-105.868461
X. C. Durango - Mazatlán (Cuota)	265.20	1	0	5215	4.5	74.3	3.6	4.0	2.5	7.5	2.8	0.6	0.2	78.8	3.6	17.6	0.077	0.544	23.189952	-106.174237
T. Der. Durango	267.99	1	0	7391	6.6	73.4	3.3	4.4	2.7	6.7	2.2	0.5	0.2	80.0	3.3	16.7	0.076	0.729	23.189403	-106.204992
T. Der. Durango	267.99	3	1	10006	8.7	75.8	3.9	3.1	2.3	3.6	0.8	1.5	0.3	84.5	3.9	11.6	0.078	0.513	23.189299	-106.210372
T. Der. Durango	267.99	3	2	10154	8.6	75.5	4.0	3.0	2.2	3.7	0.9	1.7	0.4	84.1	4.0	11.9	0.074	0.513	23.189184	-106.210367
Villa Unión	269.52	3	1	11748	8.8	79.1	3.5	2.7	1.9	2.5	0.6	0.7	0.2	87.9	3.5	8.6	0.073	0.592	23.190443	-106.222362
Villa Unión	269.52	3	2	12763	8.7	79.1	3.4	2.8	1.8	2.5	0.7	0.8	0.2	87.8	3.4	8.8	0.081	0.592	23.190322	-106.222418
T. Der. Libramiento de Mazatlán	288.87	1	1	24245	6.5	84.2	1.3	3.3	1.9	1.4	0.7	0.5	0.2	90.7	1.3	8.0	0.081	0.541	23.225198	-106.383047
T. Der. Libramiento de Mazatlán	288.87	1	2	24846	6.7	83.9	1.3	3.2	1.8	1.5	0.8	0.6	0.2	90.6	1.3	8.1	0.082	0.541	23.225141	-106.383103

SINALOA

7 CARR: Tepic - Mazatlán

CLAVE: 00499

RUTA: MEX-015

AÑO: 2025

LUGAR	ESTACION	CLASIFICACION VEHICULAR EN PORCIENTO												COORDENADAS								
		KM	TE	SC	TDPA	M	A	B	C2	C3	T3S2	T3S3	T3S2R4	OTROS	A	B	C	K'	D	LATITUD	LONGITUD	
Mazatlán	292.00																					

8 CARR: Durango - Mazatlán (Cuota)

CLAVE: 00084

RUTA: MEX-040D

AÑO: 2025

LUGAR	ESTACION	CLASIFICACION VEHICULAR EN PORCIENTO												COORDENADAS						
		KM	TE	SC	TDPA	M	A	B	C2	C3	T3S2	T3S3	T3S2R4	OTROS	A	B	C	K'	D	LATITUD
Libramiento de Durango	21.30	3	0	4229	4.4	60.7	6.4	4.0	2.7	10.7	3.0	7.2	0.9	65.1	6.4	28.5	0.091	0.547	24.006052	-104.731258
Plaza de Cobro Durango	22.20	2	0	3335	1.1	62.3	3.7	3.0	3.6	15.0	2.2	7.8	1.3	63.4	3.7	32.9	0.108	0.500	24.005080	-104.734540
Ent. Olinapa	44.50	1	0	4099	3.0	63.7	5.2	5.1	3.1	10.5	2.5	5.9	1.0	66.7	5.2	28.1	0.098	0.660	23.982233	-104.943501
Plaza de Cobro Llano Grande	73.80	2	0	2984	1.1	59.1	4.0	3.1	3.8	16.5	2.4	8.4	1.6	60.2	4.0	35.8	0.108	0.500	23.864514	-105.233202
X. C. Durango - Villa Unión	80.14	1	0	4154	3.5	61.5	6.2	6.2	2.4	11.6	3.2	5.0	0.4	65.0	6.2	28.8	0.063	0.654	23.859504	-105.246689
T. Der. El Salto 1er Acceso	91.60	1	0	5137	3.1	66.1	5.2	4.6	2.2	10.6	2.8	4.6	0.8	69.2	5.2	25.6	0.068	0.681	23.801381	-105.328089
T. Der. El Salto 2do Acceso	104.20	1	0	3217	4.5	58.3	6.6	7.5	2.4	10.7	3.3	5.9	0.8	62.8	6.6	30.6	0.091	0.589	23.756336	-105.424083
T. Der. El Salto 2do Acceso	104.20	3	0	4991	4.3	58.0	6.5	8.9	2.7	11.0	3.6	4.7	0.3	62.3	6.5	31.2	0.070	0.504	23.756880	-105.440776
T. Der. La Campana	111.00	3	0	3914	4.2	54.2	6.6	7.9	3.5	10.9	3.7	8.1	0.9	58.4	6.6	35.0	0.067	0.540	23.721591	-105.488449
Lim. Edos. Term. Dgo. Ppia. Sin.	157.40																			
Entronque Santa Lucia	172.20	3	0	4206	5.4	62.4	6.1	4.4	2.7	9.8	3.2	5.6	0.4	67.8	6.1	26.1	0.085	0.503	23.452179	-105.842412
Concordia	213.70	1	0	3584	5.5	60.9	5.6	5.0	2.3	11.5	2.6	6.4	0.2	66.4	5.6	28.0	0.100	0.591	23.267885	-106.040789
Concordia	213.70	3	0	3092	3.2	62.6	6.3	4.0	2.1	12.7	2.1	6.2	0.8	65.8	6.3	27.9	0.100	0.641	23.250152	-106.061777
Villa Unión	229.70	1	0	3567	3.9	58.4	7.5	7.5	1.6	10.1	2.5	7.6	0.9	62.3	7.5	30.2	0.115	0.544	23.201300	-106.164259

9 CARR: Libramiento de Culiacán (Cuota)

CLAVE:

RUTA: MEX-015D

AÑO: 2025

LUGAR	ESTACION	CLASIFICACION VEHICULAR EN PORCIENTO												COORDENADAS						
		KM	TE	SC	TDPA	M	A	B	C2	C3	T3S2	T3S3	T3S2R4	OTROS	A	B	C	K'	D	LATITUD
T. C. Mazatlán - Culiacán (Cuota)	181.80																			
Plaza de Cobro San Pedro	197.10	2	1	1692	0.4	29.1	1.3	3.7	4.7	41.2	5.3	10.7	3.6	29.5	1.3	69.2	0.101	0.500	24.693361	-107.525419
Plaza de Cobro San Pedro	197.10	2	2	1692	0.4	29.1	1.3	3.7	4.7	41.2	5.3	10.7	3.6	29.5	1.3	69.2	0.101	0.500	24.693361	-107.525419
T. C. Culiacán - Las Brisas (Cuota)	203.30	1	1	2186	6.5	40.5	4.8	3.4	3.2	29.8	4.0	6.8	1.0	47.0	4.8	48.2	0.073	0.510	24.744960	-107.563714
T. C. Culiacán - Las Brisas (Cuota)	203.30	1	2	2501	6.3	40.5	4.8	3.2	3.1	30.2	3.7	7.2	1.0	46.8	4.8	48.4	0.059	0.510	24.744925	-107.563797

SINALOA

10 CARR: Libramiento de Mazatlán (Cuota)

CLAVE:

RUTA: MEX-015D

AÑO: 2025

LUGAR	ESTACION				CLASIFICACION VEHICULAR EN PORCIENTO													COORDENADAS		
	KM	TE	SC	TDPA	M	A	B	C2	C3	T3S2	T3S3	T3S2R4	OTROS	A	B	C	K'	D	LATITUD	LONGITUD
Villa Unión (Ent. Caleritas)	0.00	3	1	4486	3.6	46.8	9.9	6.3	2.0	21.1	3.1	6.3	0.9	50.4	9.9	39.7	0.064	0.590	23.201354	-106.213780
Villa Unión (Ent. Caleritas)	0.00	3	2	4036	3.7	46.7	10.0	6.2	1.8	21.2	3.1	6.4	0.9	50.4	10.0	39.6	0.083	0.590	23.201271	-106.213785
Plaza de Cobro El Vainillo	6.00	2	1	3372	1.1	39.8	4.6	4.0	4.7	30.9	4.0	8.5	2.4	40.9	4.6	54.5	0.090	0.500	23.216186	-106.260339
Plaza de Cobro El Vainillo	6.00	2	2	3372	1.1	39.8	4.6	4.0	4.7	30.9	4.0	8.5	2.4	40.9	4.6	54.5	0.090	0.500	23.216186	-106.260339
T. Izq. Aeropuerto Internacional de Mazatlán	6.45	3	1	5342	4.2	49.6	8.0	7.5	2.1	19.7	2.5	5.5	0.9	53.8	8.0	38.2	0.086	0.505	23.224376	-106.271922
T. Izq. Aeropuerto Internacional de Mazatlán	6.45	3	2	5967	4.3	48.8	8.2	7.6	2.0	19.9	2.6	5.7	0.9	53.1	8.2	38.7	0.081	0.505	23.224317	-106.271982
T. C. Mazatlán - Culiacán	28.60	1	1	9100	7.0	59.7	6.3	4.7	2.2	14.3	1.6	3.3	0.9	66.7	6.3	27.0	0.095	0.595	23.306179	-106.394512
T. C. Mazatlán - Culiacán	28.60	1	2	9625	6.9	59.6	6.4	4.8	2.1	14.2	1.6	3.4	1.0	66.5	6.4	27.1	0.095	0.595	23.306094	-106.394536
T. C. Mazatlán - Culiacán	28.60	3	1	6307	7.8	62.5	2.6	3.7	3.4	12.9	1.9	4.3	0.9	70.3	2.6	27.1	0.102	0.624	23.308310	-106.410065
T. C. Mazatlán - Culiacán	28.60	3	2	6274	7.7	62.1	2.7	3.7	3.6	13.0	2.0	4.2	1.0	69.8	2.7	27.5	0.099	0.624	23.308238	-106.410027

11 CARR: Los Mochis - Cd. Obregón (Cuota)

CLAVE: 26444

RUTA: MEX-015D

AÑO: 2025

LUGAR	ESTACION				CLASIFICACION VEHICULAR EN PORCIENTO													COORDENADAS		
	KM	TE	SC	TDPA	M	A	B	C2	C3	T3S2	T3S3	T3S2R4	OTROS	A	B	C	K'	D	LATITUD	LONGITUD
T. C. Topolobampo - Choix	0.00	3	1	8245	9.4	66.6	4.0	4.1	2.8	9.0	1.4	2.2	0.5	76.0	4.0	20.0	0.092	0.592	25.836081	-108.975288
T. C. Topolobampo - Choix	0.00	3	2	9561	9.2	67.0	4.2	3.9	2.8	8.9	1.3	2.2	0.5	76.2	4.2	19.6	0.095	0.592	25.835983	-108.975459
T. Izq. Ahome	17.13	3	1	10198	10.5	63.3	4.5	4.0	3.2	9.2	1.8	2.8	0.7	73.8	4.5	21.7	0.074	0.524	25.945693	-109.053355
T. Izq. Ahome	17.13	3	2	9303	10.4	63.6	4.3	3.8	3.0	9.4	2.0	2.8	0.7	74.0	4.3	21.7	0.071	0.524	25.945664	-109.053483
T. Izq. Coahuibampo	19.00	1	1	8188	6.9	64.9	5.1	5.4	2.3	10.3	1.8	2.5	0.8	71.8	5.1	23.1	0.078	0.528	25.959339	-109.053271
T. Izq. Coahuibampo	19.00	1	2	8390	6.7	64.3	4.4	5.4	3.1	11.3	1.7	2.3	0.8	71.0	4.4	24.6	0.072	0.528	25.958483	-109.053645
T. Izq. Coahuibampo	19.00	3	1	5553	7.1	57.6	6.1	4.4	2.6	14.6	2.4	4.3	0.9	64.7	6.1	29.2	0.070	0.501	25.970653	-109.039809
T. Izq. Coahuibampo	19.00	3	2	5855	6.6	55.8	6.2	5.1	3.2	14.9	2.6	4.8	0.8	62.4	6.2	31.4	0.069	0.501	25.970729	-109.040049
Poblado Chico	50.00	3	1	4813	6.1	62.9	7.0	4.7	1.4	12.9	1.2	3.1	0.7	69.0	7.0	24.0	0.067	0.563	26.228046	-109.054358
Poblado Chico	50.00	3	2	4931	5.8	60.0	7.5	4.6	1.2	15.2	1.3	3.5	0.9	65.8	7.5	26.7	0.075	0.563	26.228088	-109.054530
T. Der. El Fuerte	54.80	1	1	4849	5.2	58.9	6.5	4.1	2.6	13.2	3.2	5.4	0.9	64.1	6.5	29.4	0.069	0.590	26.261033	-109.044988
T. Der. El Fuerte	54.80	1	2	5225	5.5	62.1	6.7	3.2	1.6	13.1	2.0	4.9	0.9	67.6	6.7	25.7	0.082	0.590	26.261074	-109.045151
T. Der. El Fuerte	54.80	3	1	5030	6.2	57.8	6.2	4.3	2.2	14.2	2.6	5.6	0.9	64.0	6.2	29.8	0.076	0.508	26.278740	-109.039922
T. Der. El Fuerte	54.80	3	2	5054	6.3	57.3	6.5	4.1	2.3	14.3	2.5	5.7	1.0	63.6	6.5	29.9	0.072	0.508	26.280452	-109.039620
Lim. Edos. Term. Sin. Ppia. Son.	69.80																			
T. Izq. Camahuiroa	93.90	1	1	4850	7.3	55.2	6.4	6.0	2.1	15.8	2.3	3.9	1.0	62.5	6.4	31.1	0.066	0.590	26.573585	-109.155520
T. Izq. Camahuiroa	93.90	1	2	5347	7.9	52.9	6.8	6.8	2.2	16.2	2.2	4.0	1.0	60.8	6.8	32.4	0.072	0.590	26.573531	-109.155604
X. C. Alamos - Masiaca	114.30	1	1	3919	11.3	45.5	9.0	5.7	2.1	18.0	4.3	3.3	0.8	56.8	9.0	34.2	0.074	0.594	26.716504	-109.278207
X. C. Alamos - Masiaca	114.30	1	2	4379	10.8	44.6	8.9	5.5	2.5	18.3	4.5	3.9	1.0	55.4	8.9	35.7	0.067	0.594	26.716350	-109.278438
T. Izq. Huatabampo	128.50	1	1	3398	4.7	56.4	6.7	4.7	3.8	14.3	2.9	5.5	1.0	61.1	6.7	32.2	0.088	0.530	26.836476	-109.365910

SINALOA

11 CARR: Los Mochis - Cd. Obregón (Cuota)

CLAVE: 26444

RUTA: MEX-015D

AÑO: 2025

LUGAR	ESTACION				CLASIFICACION VEHICULAR EN PORCIENTO										COORDENADAS					
	KM	TE	SC	TDPA	M	A	B	C2	C3	T3S2	T3S3	T3S2R4	OTROS	A	B	C	K'	D	LATITUD	LONGITUD
T. Izq. Huatabampo	128.50	1	2	3906	4.5	57.2	6.8	4.7	3.6	14.1	2.3	5.9	0.9	61.7	6.8	31.5	0.073	0.530	26.836362	-109.366170
Plaza de Cobro Estacion Don (La Jaula)	129.90	2	1	2755	0.2	44.2	7.0	2.5	2.4	28.9	3.2	9.0	2.6	44.4	7.0	48.6	0.086	0.500	26.849735	-109.373267
Plaza de Cobro Estacion Don (La Jaula)	129.90	2	2	2755	0.2	44.2	7.0	2.5	2.4	28.9	3.2	9.0	2.6	44.4	7.0	48.6	0.086	0.500	26.849735	-109.373267
Navojoa	155.00	1	1	6528	9.1	55.3	4.8	5.9	3.3	15.2	2.2	3.4	0.8	64.4	4.8	30.8	0.095	0.644	27.029162	-109.434969
Navojoa	155.00	1	2	7150	8.6	55.6	5.1	6.5	3.1	14.8	2.0	3.4	0.9	64.2	5.1	30.7	0.113	0.644	27.029530	-109.435270
Navojoa	155.00	3	1	7830	13.5	74.9	4.2	3.9	1.8	1.3	0.1	0.3	0.0	88.4	4.2	7.4	0.071	0.521	27.103754	-109.447800
Navojoa	155.00	3	2	8016	13.2	76.5	3.2	3.8	1.5	1.2	0.1	0.4	0.1	89.7	3.2	7.1	0.075	0.521	27.103744	-109.447893
T. Izq. Villa Juárez	167.25	1	1	6633	5.1	67.1	4.4	4.0	2.8	10.7	1.9	3.1	0.9	72.2	4.4	23.4	0.066	0.552	27.146815	-109.496493
T. Izq. Villa Juárez	167.25	1	2	7186	5.3	67.2	4.3	4.2	3.0	10.5	1.6	3.1	0.8	72.5	4.3	23.2	0.069	0.552	27.146601	-109.496713
T. Izq. Villa Juárez	167.25	3	1	6435	5.8	59.9	7.6	4.3	1.8	13.2	2.1	4.3	1.0	65.7	7.6	26.7	0.066	0.555	27.158686	-109.511602
T. Izq. Villa Juárez	167.25	3	2	7359	6.0	60.4	7.2	4.1	2.1	12.8	1.7	4.8	0.9	66.4	7.2	26.4	0.068	0.555	27.158412	-109.511862
Plaza de Cobro Fundición	195.80	2	1	3774	0.3	55.3	6.4	2.7	2.1	21.7	2.7	6.7	2.1	55.6	6.4	38.0	0.086	0.500	27.320494	-109.719697
Plaza de Cobro Fundición	195.80	2	2	3774	0.3	55.3	6.4	2.7	2.1	21.7	2.7	6.7	2.1	55.6	6.4	38.0	0.086	0.500	27.320494	-109.719697
T. Der. Fundición	196.30	1	1	5430	3.2	59.8	6.6	4.8	2.3	16.5	2.3	3.6	0.9	63.0	6.6	30.4	0.069	0.510	27.312762	-109.709700
T. Der. Fundición	196.30	1	2	5584	3.6	60.7	7.1	4.0	1.9	15.9	2.3	3.5	1.0	64.3	7.1	28.6	0.072	0.510	27.312505	-109.709955
T. Der. Libramiento de Cd. Obregón (Cuota)	203.52	1	1	8374	3.9	65.1	7.8	4.0	1.8	11.8	1.9	2.8	0.9	69.0	7.8	23.2	0.075	0.541	27.360761	-109.771644
T. Der. Libramiento de Cd. Obregón (Cuota)	203.52	1	2	8243	3.7	67.2	6.6	3.6	1.6	12.0	1.4	3.0	0.9	70.9	6.6	22.5	0.079	0.541	27.360550	-109.771844
Cd. Obregón	222.70	1	1	10195	8.4	72.0	6.8	4.6	2.2	3.4	1.1	1.2	0.3	80.4	6.8	12.8	0.083	0.562	27.455057	-109.892858
Cd. Obregón	222.70	1	2	9770	8.2	72.4	5.4	4.5	2.6	3.9	1.5	1.2	0.3	80.6	5.4	14.0	0.111	0.562	27.454814	-109.893088

12 CARR: Mazatlán - Culiacán (Cuota)

CLAVE: 25045

RUTA: MEX-015D

AÑO: 2025

LUGAR	ESTACION				CLASIFICACION VEHICULAR EN PORCIENTO										COORDENADAS					
	KM	TE	SC	TDPA	M	A	B	C2	C3	T3S2	T3S3	T3S2R4	OTROS	A	B	C	K'	D	LATITUD	LONGITUD
Ent. Venadillo	0.00	3	1	6623	6.0	58.3	7.3	5.3	2.9	13.3	2.0	3.9	1.0	64.3	7.3	28.4	0.069	0.671	23.310266	-106.427029
Ent. Venadillo	0.00	3	2	6878	6.2	58.6	7.5	5.2	3.0	13.1	1.7	3.8	0.9	64.8	7.5	27.7	0.081	0.671	23.310215	-106.427092
Plaza de Cobro Mármol	25.15	3	1	5428	4.2	46.7	8.8	5.4	2.6	22.0	3.5	5.8	1.0	50.9	8.8	40.3	0.083	0.648	23.477044	-106.576356
Plaza de Cobro Mármol	25.15	3	2	4684	4.1	46.9	9.1	5.2	2.5	22.1	3.3	5.8	1.0	51.0	9.1	39.9	0.068	0.648	23.476984	-106.576416
T. Izq. Dimas	62.20	1	1	5031	3.1	46.9	8.9	5.7	2.4	22.9	3.1	6.1	0.9	50.0	8.9	41.1	0.070	0.591	23.721631	-106.770017
T. Izq. Dimas	62.20	1	2	5199	2.9	47.3	9.0	5.6	2.1	23.0	3.3	5.9	0.9	50.2	9.0	40.8	0.079	0.591	23.720790	-106.769852
T. Der. La Cruz	89.37	1	1	5228	4.2	50.4	8.0	6.8	2.4	19.6	2.6	4.9	1.1	54.6	8.0	37.4	0.088	0.595	23.911130	-106.924917
T. Der. La Cruz	89.37	1	2	5018	4.0	50.1	7.9	6.9	2.6	19.4	2.9	5.2	1.0	54.1	7.9	38.0	0.086	0.595	23.911101	-106.924990
T. Der. Quila	153.39	1	1	4603	4.2	50.8	9.0	4.9	2.7	18.2	2.9	6.3	1.0	55.0	9.0	36.0	0.077	0.565	24.395405	-107.269105
T. Der. Quila	153.39	1	2	5154	4.2	51.4	8.8	4.8	2.5	18.2	3.1	6.0	1.0	55.6	8.8	35.6	0.075	0.565	24.395162	-107.269254
Plaza de Cobro Costa Rica	187.80	3	1	4616	5.3	47.1	9.0	4.0	2.8	21.6	3.0	6.6	0.6	52.4	9.0	38.6	0.099	0.549	24.576048	-107.434632

SINALOA

12 CARR: Mazatlán - Culiacán (Cuota)

CLAVE: 25045

RUTA: MEX-015D

AÑO: 2025

LUGAR	ESTACION				CLASIFICACION VEHICULAR EN PORCIENTO														COORDENADAS	
	KM	TE	SC	TDPA	M	A	B	C2	C3	T3S2	T3S3	T3S2R4	OTROS	A	B	C	K'	D	LATITUD	LONGITUD
Plaza de Cobro Costa Rica	187.80	3	2	5379	5.3	47.7	8.8	4.2	2.4	21.4	3.2	6.4	0.6	53.0	8.8	38.2	0.073	0.549	24.575676	-107.434699
T. C. Culiacán - El Dorado	190.26																			

13 CARR: Tepic - Villa Unión (cuota)

CLAVE: 00500

RUTA: MEX-015D

AÑO: 2025

LUGAR	ESTACION				CLASIFICACION VEHICULAR EN PORCIENTO														COORDENADAS	
	KM	TE	SC	TDPA	M	A	B	C2	C3	T3S2	T3S3	T3S2R4	OTROS	A	B	C	K'	D	LATITUD	LONGITUD
Tepic	0.00																			
Lib. de Tepic (Cuota)	6.60																			
Plaza de Cobro Trapichillo	8.65	1	1	7285	2.5	80.4	4.3	3.9	1.8	5.0	1.0	0.8	0.3	82.9	4.3	12.8	0.114	0.505	21.555588	-104.960275
Plaza de Cobro Trapichillo	8.65	1	2	6649	2.6	80.6	4.2	3.8	1.7	4.9	1.1	0.9	0.2	83.2	4.2	12.6	0.110	0.505	21.553746	-104.959309
Plaza de Cobro Trapichillo	8.65	2	1	4741	0.9	57.4	6.1	4.0	4.5	19.3	2.0	4.2	1.6	58.3	6.1	35.6	0.098	0.500	21.571789	-104.987394
Plaza de Cobro Trapichillo	8.65	2	2	4741	0.9	57.4	6.1	4.0	4.5	19.3	2.0	4.2	1.6	58.3	6.1	35.6	0.098	0.500	21.571789	-104.987394
T. C. Tepic - Mazatlán	20.25	1	1	6920	3.9	67.9	8.2	4.4	2.4	6.8	1.9	3.6	0.9	71.8	8.2	20.0	0.062	0.500	21.664169	-105.027340
T. C. Tepic - Mazatlán	20.25	1	2	6477	3.8	68.1	8.3	4.3	2.4	6.4	2.0	3.9	0.8	71.9	8.3	19.8	0.063	0.500	21.662889	-105.027844
T. C. Tepic - Mazatlán (Crucero de San Blas)	26.59	3	0	6583	5.6	50.8	10.4	6.3	1.9	17.3	2.1	4.8	0.8	56.4	10.4	33.2	0.071	0.513	21.714574	-105.060457
Est. Ruíz	54.90	1	0	7271	6.4	44.2	10.3	5.4	3.0	21.0	2.4	6.3	1.0	50.6	10.3	39.1	0.059	0.545	21.947691	-105.112499
Est. Ruíz	54.90	3	0	5909	3.1	41.4	12.1	7.7	1.7	23.8	3.1	6.5	0.6	44.5	12.1	43.4	0.057	0.557	21.965080	-105.124606
Rosamorada	73.50	1	0	6847	5.4	41.7	10.9	6.0	3.0	23.3	2.5	6.3	0.9	47.1	10.9	42.0	0.056	0.525	22.084156	-105.210249
Rosamorada	73.50	3	0	6934	5.2	42.1	10.7	6.9	2.4	23.0	2.3	6.6	0.8	47.3	10.7	42.0	0.062	0.593	22.093443	-105.222010
Acaponeta	120.20	1	0	5568	5.8	40.9	10.6	4.4	2.2	26.1	2.4	6.8	0.8	46.7	10.6	42.7	0.062	0.510	22.446304	-105.418002
Plaza de Cobro Acaponeta	120.20	2	0	4026	0.3	29.1	5.9	4.4	5.8	38.7	3.0	9.7	3.1	29.4	5.9	64.7	0.081	0.500	22.454065	-105.418726
Acaponeta	120.20	3	0	5537	3.2	40.1	9.5	6.3	3.4	25.9	2.6	8.1	0.9	43.3	9.5	47.2	0.067	0.596	22.458726	-105.430825
Lim. Edos. Term. Nay. Ppia. Sin.	132.80																			
T. C. Tepic - Mazatlán	164.00	1	0	5962	8.8	41.3	7.7	4.8	3.5	22.3	3.1	7.7	0.8	50.1	7.7	42.2	0.064	0.514	22.752368	-105.650968
Escuinapa de Hidalgo	180.00	1	1	2889	6.0	39.0	9.7	5.6	2.9	26.3	2.7	7.0	0.8	45.0	9.7	45.3	0.075	0.564	22.841595	-105.739778
Escuinapa de Hidalgo	180.00	1	2	2745	6.6	37.2	9.4	5.9	3.0	26.5	2.9	7.6	0.9	43.8	9.4	46.8	0.080	0.564	22.841576	-105.739824
Escuinapa de Hidalgo	180.00	3	0	6235	4.6	38.4	9.7	5.3	2.4	29.0	2.6	7.1	0.9	43.0	9.7	47.3	0.065	0.546	22.860335	-105.755794
Rosario	199.50	1	0	5533	6.2	42.6	12.3	5.4	2.2	21.9	2.2	6.4	0.8	48.8	12.3	38.9	0.094	0.564	22.967440	-105.857010
Plaza de Cobro Rosario	199.50	2	0	4786	0.7	33.3	6.0	4.0	4.8	36.1	3.4	8.7	3.0	34.0	6.0	60.0	0.081	0.500	22.984690	-105.878103
Rosario	199.50	3	1	3753	5.0	38.6	12.6	9.9	2.9	21.5	2.6	5.9	1.0	43.6	12.6	43.8	0.064	0.519	22.993107	-105.887619
Rosario	199.50	3	2	3486	4.9	39.0	12.4	9.9	2.7	21.3	2.6	6.2	1.0	43.9	12.4	43.7	0.075	0.519	22.993102	-105.887674
X. C. Durango - Villa Unión (Cuota)	238.50	1	0	6752	6.4	45.0	10.6	5.6	2.2	20.9	2.3	6.3	0.7	51.4	10.6	38.0	0.070	0.553	23.185894	-106.174192
X. C. Durango - Villa Unión (Cuota)	238.50	3	1	5472	7.7	47.5	10.5	4.5	2.9	17.8	2.2	6.2	0.7	55.2	10.5	34.3	0.079	0.635	23.195179	-106.192204
X. C. Durango - Villa Unión (Cuota)	238.50	3	2	5607	7.8	46.9	10.6	4.5	2.9	17.9	2.3	6.5	0.6	54.7	10.6	34.7	0.101	0.635	23.194939	-106.192330

SINALOA

14 CARR: Carrizal - Campo Anibal

CLAVE: 25585

RUTA: SIN-019

AÑO: 2025

LUGAR	ESTACION				CLASIFICACION VEHICULAR EN PORCIENTO										COORDENADAS					
	KM	TE	SC	TDPA	M	A	B	C2	C3	T3S2	T3S3	T3S2R4	OTROS	A	B	C	K'	D	LATITUD	LONGITUD
T. C. Mazatlán - Culiacán	0.00	3	0	1961	15.5	76.0	0.5	1.9	3.1	2.2	0.4	0.4	0.0	91.5	0.5	8.0	0.094	0.554	24.635604	-107.273512
X. C. Culiacán - El Dorado	29.20	1	0	12191	14.1	80.7	1.2	2.2	0.9	0.5	0.2	0.2	0.0	94.8	1.2	4.0	0.080	0.567	24.590317	-107.436861
X. C. Culiacán - El Dorado	29.20	3	0	1215	17.8	71.8	2.3	3.6	3.6	0.4	0.2	0.3	0.0	89.6	2.3	8.1	0.094	0.640	24.599367	-107.449209
T. C. San Pedro - Campo Anibal	32.00	1	0	1230	23.0	67.3	1.9	4.2	2.8	0.6	0.1	0.1	0.0	90.3	1.9	7.8	0.089	0.514	24.590227	-107.540941

15 CARR: Culiacán - Altata

CLAVE: 25013

RUTA: SIN-030

AÑO: 2025

LUGAR	ESTACION				CLASIFICACION VEHICULAR EN PORCIENTO										COORDENADAS					
	KM	TE	SC	TDPA	M	A	B	C2	C3	T3S2	T3S3	T3S2R4	OTROS	A	B	C	K'	D	LATITUD	LONGITUD
Culiacán	0.00																			
T. Izq. El Dorado	6.20	1	1	27160	4.6	86.2	1.7	3.0	1.4	0.6	0.2	1.3	1.0	90.8	1.7	7.5	0.079	0.526	24.779978	-107.437745
T. Izq. El Dorado	6.20	1	2	28155	4.5	87.0	1.5	2.8	1.2	0.5	0.2	1.5	0.8	91.5	1.5	7.0	0.087	0.526	24.779785	-107.437803
T. Izq. El Dorado	6.20	3	1	27800	4.8	87.4	1.2	2.0	1.1	1.0	0.6	1.4	0.5	92.2	1.2	6.6	0.080	0.598	24.775468	-107.450449
T. Izq. El Dorado	6.20	3	2	29038	4.6	88.3	1.6	2.2	1.2	0.8	0.4	0.6	0.3	92.9	1.6	5.5	0.098	0.598	24.775338	-107.450354
T. Izq. Aeropuerto	8.70	3	1	19440	5.3	88.8	1.0	2.6	0.9	0.7	0.2	0.4	0.1	94.1	1.0	4.9	0.087	0.513	24.775023	-107.474524
T. Izq. Aeropuerto	8.70	3	2	20544	5.0	89.2	0.9	2.5	1.0	0.7	0.2	0.2	0.3	94.2	0.9	4.9	0.080	0.513	24.775123	-107.474509
Navolato	32.40	1	1	9608	10.7	82.0	0.8	2.4	2.0	1.0	0.5	0.3	0.3	92.7	0.8	6.5	0.092	0.528	24.755942	-107.686648
Navolato	32.40	1	2	9369	11.1	81.2	0.8	2.4	2.1	1.0	0.5	0.5	0.4	92.3	0.8	6.9	0.095	0.528	24.755851	-107.686631
Navolato	32.40	3	1	8433	11.1	79.8	1.8	3.8	1.8	0.7	0.4	0.4	0.2	90.9	1.8	7.3	0.101	0.734	24.755527	-107.705904
Navolato	32.40	3	2	8939	11.2	79.9	1.7	3.6	1.7	0.7	0.5	0.5	0.2	91.1	1.7	7.2	0.120	0.734	24.755424	-107.705915
T. Der. 5 Hermanos	38.20	3	1	3057	9.7	83.5	0.7	1.7	1.9	1.2	0.5	0.4	0.4	93.2	0.7	6.1	0.228	0.706	24.751405	-107.743879
T. Der. 5 Hermanos	38.20	3	2	3157	9.9	83.8	0.7	1.4	2.0	1.0	0.5	0.4	0.3	93.7	0.7	5.6	0.233	0.706	24.751329	-107.743807
Altata	67.00	1	1	2090	11.2	84.0	0.4	1.9	1.5	0.3	0.2	0.3	0.2	95.2	0.4	4.4	0.265	0.703	24.646251	-107.919556
Altata	67.00	1	2	2058	11.1	84.1	0.3	1.9	1.6	0.3	0.3	0.2	0.2	95.2	0.3	4.5	0.310	0.703	24.646189	-107.919433

16 CARR: Culiacán - El Dorado

CLAVE: 25044

RUTA: SIN-005

AÑO: 2025

LUGAR	ESTACION				CLASIFICACION VEHICULAR EN PORCIENTO										COORDENADAS					
	KM	TE	SC	TDPA	M	A	B	C2	C3	T3S2	T3S3	T3S2R4	OTROS	A	B	C	K'	D	LATITUD	LONGITUD
T. C. Culiacán - Altata	0.00	3	1	24669	6.5	86.7	1.2	1.6	1.4	1.2	0.1	1.0	0.3	93.2	1.2	5.6	0.079	0.547	24.768256	-107.447336
T. C. Culiacán - Altata	0.00	3	2	23610	6.3	86.2	1.3	1.7	1.5	1.4	0.3	0.9	0.4	92.5	1.3	6.2	0.092	0.547	24.768225	-107.447197
T. C. Libramiento Sur de Culiacán	3.60	3	1	18290	3.5	86.5	2.0	2.6	1.6	2.7	0.2	0.7	0.2	90.0	2.0	8.0	0.108	0.600	24.740104	-107.454143
T. C. Libramiento Sur de Culiacán	3.60	3	2	18477	3.2	86.4	2.1	2.4	1.9	2.5	0.4	0.8	0.3	89.6	2.1	8.3	0.096	0.600	24.739189	-107.454215
X. C. Carrizal - Campo Anibal	21.35	1	1	7757	2.8	80.2	3.8	3.9	1.9	5.2	0.5	1.4	0.3	83.0	3.8	13.2	0.083	0.571	24.602422	-107.444567
X. C. Carrizal - Campo Anibal	21.35	1	2	7806	2.6	79.9	3.5	4.2	1.9	5.6	0.7	1.3	0.3	82.5	3.5	14.0	0.093	0.571	24.602415	-107.444472

SINALOA

16 CARR: Culiacán - El Dorado

CLAVE: 25044

RUTA: SIN-005

AÑO: 2025

LUGAR	ESTACION				CLASIFICACION VEHICULAR EN PORCIENTO										COORDENADAS					
	KM	TE	SC	TDPA	M	A	B	C2	C3	T3S2	T3S3	T3S2R4	OTROS	A	B	C	K'	D	LATITUD	LONGITUD
X. C. Carrizal - Campo Aníbal	21.35	3	0	6454	10.5	79.4	1.5	3.1	2.0	1.8	0.8	0.6	0.3	89.9	1.5	8.6	0.101	0.630	24.580288	-107.444566
El Dorado	55.00	1	1	3844	17.4	76.2	1.3	1.9	1.6	0.7	0.6	0.2	0.1	93.6	1.3	5.1	0.104	0.503	24.341652	-107.370639
El Dorado	55.00	1	2	3913	16.9	76.4	1.3	1.9	1.7	0.9	0.6	0.2	0.1	93.3	1.3	5.4	0.111	0.503	24.341642	-107.370642

17 CARR: El Limoncito - Cinco Hermanos

CLAVE: 25016

RUTA: SIN-016

AÑO: 2025

LUGAR	ESTACION				CLASIFICACION VEHICULAR EN PORCIENTO										COORDENADAS					
	KM	TE	SC	TDPA	M	A	B	C2	C3	T3S2	T3S3	T3S2R4	OTROS	A	B	C	K'	D	LATITUD	LONGITUD
T. C. Culiacán - Altata	0.00	3	0	3589	14.3	77.7	0.6	3.3	2.2	1.6	0.2	0.1	0.0	92.0	0.6	7.4	0.078	0.629	24.760424	-107.743425
Cinco Hermanos	16.00	1	0	1305	33.6	58.3	1.6	3.5	1.5	0.7	0.5	0.2	0.1	91.9	1.6	6.5	0.100	0.542	24.809264	-107.857605

18 CARR: El Salado - El Dorado

CLAVE: 25010

RUTA: SIN-010

AÑO: 2025

LUGAR	ESTACION				CLASIFICACION VEHICULAR EN PORCIENTO										COORDENADAS					
	KM	TE	SC	TDPA	M	A	B	C2	C3	T3S2	T3S3	T3S2R4	OTROS	A	B	C	K'	D	LATITUD	LONGITUD
T. C. Mazatlán - Culiacán	0.00	3	0	3786	7.1	80.8	1.4	2.9	1.9	2.1	3.5	0.3	0.0	87.9	1.4	10.7	0.077	0.546	24.505543	-107.167084
El Dorado	31.00	1	0	5050	26.0	67.5	1.5	2.0	1.5	1.1	0.3	0.1	0.0	93.5	1.5	5.0	0.081	0.520	24.333310	-107.345457

19 CARR: Escuinapa de Hidalgo - Teacapan

CLAVE: 25001

RUTA: SIN-001

AÑO: 2025

LUGAR	ESTACION				CLASIFICACION VEHICULAR EN PORCIENTO										COORDENADAS					
	KM	TE	SC	TDPA	M	A	B	C2	C3	T3S2	T3S3	T3S2R4	OTROS	A	B	C	K'	D	LATITUD	LONGITUD
Escuinapa de Hidalgo	0.00	3	0	4924	16.0	72.3	2.9	5.4	1.8	0.9	0.3	0.3	0.1	88.3	2.9	8.8	0.087	0.773	22.816918	-105.794539
Teacapan	41.00	1	0	2423	22.3	71.8	3.0	2.0	0.6	0.1	0.0	0.1	0.1	94.1	3.0	2.9	0.107	0.546	22.548417	-105.741425

20 CARR: Estación Dimas - San Ignacio

CLAVE: 25007

RUTA: SIN-006

AÑO: 2025

LUGAR	ESTACION				CLASIFICACION VEHICULAR EN PORCIENTO										COORDENADAS					
	KM	TE	SC	TDPA	M	A	B	C2	C3	T3S2	T3S3	T3S2R4	OTROS	A	B	C	K'	D	LATITUD	LONGITUD
Dimas	0.00																			
X. C. Mazatlán - Culiacán	23.15	1	0	844	10.5	79.0	1.0	3.7	3.9	1.2	0.6	0.1	0.0	89.5	1.0	9.5	0.090	0.553	23.838290	-106.617168
X. C. Mazatlán - Culiacán	23.15	3	0	1968	11.5	81.8	1.1	2.9	1.9	0.4	0.2	0.2	0.0	93.3	1.1	5.6	0.080	0.513	23.790860	-106.609334
San Ignacio	56.00	1	0	1959	19.4	75.1	0.8	3.1	1.2	0.3	0.0	0.1	0.0	94.5	0.8	4.7	0.094	0.549	23.924682	-106.429233

SINALOA

21 CARR: Guamuchil - Mocorito

CLAVE: 25021

RUTA: SIN-021

AÑO: 2025

LUGAR	ESTACION				CLASIFICACION VEHICULAR EN PORCIENTO										COORDENADAS					
	KM	TE	SC	TDPA	M	A	B	C2	C3	T3S2	T3S3	T3S2R4	OTROS	A	B	C	K'	D	LATITUD	LONGITUD
Guamuchil	0.00	3	0	6509	9.3	84.7	1.2	1.7	1.7	0.7	0.5	0.2	0.0	94.0	1.2	4.8	0.080	0.510	25.457758	-108.052431
Mocorito	17.00	1	1	3241	11.0	80.6	1.5	2.7	1.7	1.2	0.6	0.4	0.3	91.6	1.5	6.9	0.087	0.533	25.477866	-107.929753
Mocorito	17.00	1	2	3181	11.3	80.5	1.5	2.6	1.8	1.0	0.6	0.4	0.3	91.8	1.5	6.7	0.079	0.533	25.477937	-107.929788

22 CARR: Guasave - Sinaloa de Leyva

CLAVE: 25023

RUTA: SIN-023

AÑO: 2025

LUGAR	ESTACION				CLASIFICACION VEHICULAR EN PORCIENTO										COORDENADAS					
	KM	TE	SC	TDPA	M	A	B	C2	C3	T3S2	T3S3	T3S2R4	OTROS	A	B	C	K'	D	LATITUD	LONGITUD
Guasave	0.00																			
X. C. Culiacán - Los Mochis	1.15	3	1	6216	12.6	77.7	0.6	2.1	3.4	1.7	0.7	0.9	0.3	90.3	0.6	9.1	0.087	0.611	25.595519	-108.455083
X. C. Culiacán - Los Mochis	1.15	3	2	6033	13.0	77.9	0.7	1.9	2.9	1.5	0.8	0.8	0.5	90.9	0.7	8.4	0.076	0.611	25.595587	-108.455202
Sinaloa de Leyva	74.50	1	1	1647	11.4	82.1	1.0	2.4	1.7	0.9	0.2	0.3	0.0	93.5	1.0	5.5	0.106	0.527	25.829400	-108.232533
Sinaloa de Leyva	74.50	1	2	1618	11.6	81.6	1.3	2.5	1.8	0.9	0.2	0.1	0.0	93.2	1.3	5.5	0.097	0.527	25.829449	-108.232527

23 CARR: Navolato - El Castillo

CLAVE: 25004

RUTA: SIN-004

AÑO: 2025

LUGAR	ESTACION				CLASIFICACION VEHICULAR EN PORCIENTO										COORDENADAS					
	KM	TE	SC	TDPA	M	A	B	C2	C3	T3S2	T3S3	T3S2R4	OTROS	A	B	C	K'	D	LATITUD	LONGITUD
Navolato	0.00	3	0	5681	14.5	77.6	0.6	3.2	2.2	1.4	0.4	0.1	0.0	92.1	0.6	7.3	0.090	0.534	24.739169	-107.685448
El Castillo	29.00	1	0	1320	26.7	67.1	0.2	5.3	0.7	0.0	0.0	0.0	0.0	93.8	0.2	6.0	0.130	0.593	24.548992	-107.705199

24 CARR: Pozole - Cofradía

CLAVE: 25080

RUTA: SIN-080

AÑO: 2025

LUGAR	ESTACION				CLASIFICACION VEHICULAR EN PORCIENTO										COORDENADAS					
	KM	TE	SC	TDPA	M	A	B	C2	C3	T3S2	T3S3	T3S2R4	OTROS	A	B	C	K'	D	LATITUD	LONGITUD
T. C. Tepic - Mazatlán	0.00	3	0	4103	16.5	71.1	1.3	4.2	2.5	1.5	2.2	0.4	0.3	87.6	1.3	11.1	0.077	0.671	23.202538	-106.261302
Cofradía	9.10	1	0	1454	19.0	74.7	1.4	2.2	1.2	0.5	0.4	0.4	0.2	93.7	1.4	4.9	0.071	0.524	23.325516	-106.255512

25 CARR: Ramal a Chametla

CLAVE: 25002

RUTA: SIN-002

AÑO: 2025

LUGAR	ESTACION				CLASIFICACION VEHICULAR EN PORCIENTO										COORDENADAS					
	KM	TE	SC	TDPA	M	A	B	C2	C3	T3S2	T3S3	T3S2R4	OTROS	A	B	C	K'	D	LATITUD	LONGITUD
T. C. Tepic - Mazatlán	0.00	3	0	3099	16.0	72.0	3.2	4.1	2.1	1.8	0.2	0.4	0.2	88.0	3.2	8.8	0.087	0.537	22.933525	-105.831971
Chametla	15.00	1	0	1557	17.1	64.7	2.6	6.4	3.8	2.1	2.3	0.6	0.4	81.8	2.6	15.6	0.087	0.526	22.882970	-105.951905

SINALOA

26 CARR: Ramal a Cosalá

CLAVE: 25008

RUTA: SIN-008

AÑO: 2025

LUGAR	ESTACION				CLASIFICACION VEHICULAR EN PORCIENTO										COORDENADAS					
	KM	TE	SC	TDPA	M	A	B	C2	C3	T3S2	T3S3	T3S2R4	OTROS	A	B	C	K'	D	LATITUD	LONGITUD
T. C. Mazatlán - Culiacán	0.00	3	0	1556	11.4	80.8	1.1	3.4	2.0	0.5	0.7	0.1	0.0	92.2	1.1	6.7	0.086	0.575	24.073689	-106.796293
Cosalá	53.00	1	0	1681	22.5	68.0	1.3	3.4	2.2	1.1	0.7	0.7	0.1	90.5	1.3	8.2	0.101	0.633	24.407383	-106.713993

27 CARR: Ramal a El Quelite

CLAVE: 25060

RUTA: SIN-060

AÑO: 2025

LUGAR	ESTACION				CLASIFICACION VEHICULAR EN PORCIENTO										COORDENADAS					
	KM	TE	SC	TDPA	M	A	B	C2	C3	T3S2	T3S3	T3S2R4	OTROS	A	B	C	K'	D	LATITUD	LONGITUD
T. C. Mazatlán - Culiacán	0.00	3	0	1418	14.1	82.2	0.6	2.5	0.3	0.2	0.1	0.0	0.0	96.3	0.6	3.1	0.094	0.571	23.531933	-106.499938
El Quelite	6.00	1	0	1617	19.4	74.5	0.4	4.6	0.9	0.1	0.1	0.0	0.0	93.9	0.4	5.7	0.090	0.510	23.547914	-106.477778

28 CARR: Ramal a Estación Bamoa

CLAVE: 25022

RUTA: SIN-022

AÑO: 2025

LUGAR	ESTACION				CLASIFICACION VEHICULAR EN PORCIENTO										COORDENADAS					
	KM	TE	SC	TDPA	M	A	B	C2	C3	T3S2	T3S3	T3S2R4	OTROS	A	B	C	K'	D	LATITUD	LONGITUD
T. C. Culiacán - Los Mochis	0.00	3	0	3551	13.3	75.9	2.2	2.8	3.8	1.2	0.5	0.3	0.0	89.2	2.2	8.6	0.073	0.570	25.529438	-108.346539
Estación Bamoa	22.50	1	0	3373	13.3	74.6	3.5	5.2	1.4	1.3	0.4	0.3	0.0	87.9	3.5	8.6	0.090	0.560	25.681139	-108.311769

29 CARR: Ramal a La Cruz

CLAVE: 25043

RUTA: SIN

AÑO: 2025

LUGAR	ESTACION				CLASIFICACION VEHICULAR EN PORCIENTO										COORDENADAS					
	KM	TE	SC	TDPA	M	A	B	C2	C3	T3S2	T3S3	T3S2R4	OTROS	A	B	C	K'	D	LATITUD	LONGITUD
T. C. Mazatlán - Culiacán	0.00	3	0	2344	12.0	80.8	1.5	2.6	1.8	1.0	0.2	0.1	0.0	92.8	1.5	5.7	0.102	0.508	24.052875	-106.797937
La Cruz	18.00	1	0	3817	16.4	77.1	1.2	2.5	1.5	0.9	0.3	0.1	0.0	93.5	1.2	5.3	0.083	0.547	23.944629	-106.870827

30 CARR: Ramal a La Noria

CLAVE: 25592

RUTA: SIN

AÑO: 2025

LUGAR	ESTACION				CLASIFICACION VEHICULAR EN PORCIENTO										COORDENADAS					
	KM	TE	SC	TDPA	M	A	B	C2	C3	T3S2	T3S3	T3S2R4	OTROS	A	B	C	K'	D	LATITUD	LONGITUD
T. C. Mazatlán - Culiacán	0.00	3	0	2312	14.2	81.5	0.7	3.1	0.4	0.1	0.0	0.0	0.0	95.7	0.7	3.6	0.140	0.514	23.350524	-106.406796
La Noria	25.50	1	0	1065	20.8	70.1	1.7	5.0	1.4	0.6	0.2	0.1	0.1	90.9	1.7	7.4	0.161	0.596	23.500113	-106.322198

SINALOA

31 CARR: Ramal a La Reforma

CLAVE: 25041

RUTA: SIN-004

AÑO: 2025

LUGAR	ESTACION				CLASIFICACION VEHICULAR EN PORCIENTO												COORDENADAS			
	KM	TE	SC	TDPA	M	A	B	C2	C3	T3S2	T3S3	T3S2R4	OTROS	A	B	C	K'	D	LATITUD	LONGITUD
T. C. Culiacán - Los Mochis	0.00	3	0	9653	6.2	86.3	1.5	3.1	1.6	0.6	0.3	0.4	0.0	92.5	1.5	6.0	0.081	0.525	25.445459	-108.085957
T. Der. La Angostura	14.00	3	0	2728	5.4	83.8	0.7	3.3	5.0	0.9	0.6	0.3	0.0	89.2	0.7	10.1	0.078	0.577	25.365614	-108.142785
La Reforma	60.00	1	0	3355	20.5	77.8	0.1	0.6	0.6	0.1	0.2	0.1	0.0	98.3	0.1	1.6	0.098	0.518	25.085411	-108.049522

32 CARR: Rosario - Caimanero

CLAVE: 25003

RUTA: SIN-003

AÑO: 2025

LUGAR	ESTACION				CLASIFICACION VEHICULAR EN PORCIENTO												COORDENADAS			
	KM	TE	SC	TDPA	M	A	B	C2	C3	T3S2	T3S3	T3S2R4	OTROS	A	B	C	K'	D	LATITUD	LONGITUD
Rosario	0.00	3	0	4308	30.4	62.6	1.0	2.3	1.9	0.9	0.3	0.4	0.2	93.0	1.0	6.0	0.091	0.550	22.979922	-105.880078
Caimanero	30.00	1	0	1455	19.6	73.0	2.3	3.9	0.8	0.2	0.1	0.1	0.0	92.6	2.3	5.1	0.152	0.529	22.882433	-106.061751

33 CARR: San Pedro - Campo Anibal

CLAVE: 25600

RUTA: SIN

AÑO: 2025

LUGAR	ESTACION				CLASIFICACION VEHICULAR EN PORCIENTO												COORDENADAS			
	KM	TE	SC	TDPA	M	A	B	C2	C3	T3S2	T3S3	T3S2R4	OTROS	A	B	C	K'	D	LATITUD	LONGITUD
T. C. Culiacán - Altata	0.00	3	0	4483	9.2	80.6	1.1	1.9	3.2	1.4	1.5	1.0	0.1	89.8	1.1	9.1	0.079	0.618	24.761661	-107.545451
Campo Anibal	24.50	1	0	1419	24.7	70.6	1.2	2.6	0.5	0.3	0.1	0.0	0.0	95.3	1.2	3.5	0.085	0.650	24.555515	-107.543310
Los Puentes	26.50																			

34 CARR: Topolobampo - Choix

CLAVE: 25032

RUTA: SIN-023

AÑO: 2025

LUGAR	ESTACION				CLASIFICACION VEHICULAR EN PORCIENTO												COORDENADAS			
	KM	TE	SC	TDPA	M	A	B	C2	C3	T3S2	T3S3	T3S2R4	OTROS	A	B	C	K'	D	LATITUD	LONGITUD
Topolobampo	0.00	3	1	4020	4.3	80.4	1.4	4.0	5.1	2.5	1.2	1.0	0.1	84.7	1.4	13.9	0.137	0.524	25.611102	-109.057446
Topolobampo	0.00	3	2	4157	4.6	79.6	1.4	4.2	5.4	2.2	1.3	1.2	0.1	84.2	1.4	14.4	0.160	0.524	25.611099	-109.057567
Los Mochis	24.00	1	1	10705	8.7	84.3	1.0	2.0	1.7	1.0	0.3	0.8	0.2	93.0	1.0	6.0	0.088	0.590	25.758946	-108.998676
Los Mochis	24.00	1	2	9467	7.1	85.3	1.2	2.1	1.9	1.0	0.4	0.7	0.3	92.4	1.2	6.4	0.105	0.590	25.758986	-108.998765
X. C. Los Mochis - Cd. Obregón (Cuota)	29.00	1	1	8992	7.5	82.7	2.0	4.2	1.8	0.8	0.4	0.4	0.2	90.2	2.0	7.8	0.087	0.501	25.819237	-108.974237
X. C. Los Mochis - Cd. Obregón (Cuota)	29.00	1	2	9340	7.0	83.7	2.2	4.3	1.6	0.7	0.2	0.2	0.1	90.7	2.2	7.1	0.084	0.501	25.819286	-108.974341
X. C. Los Mochis - Cd. Obregón (Cuota)	29.00	3	1	7433	4.6	83.6	2.3	6.2	1.2	0.8	0.5	0.5	0.3	88.2	2.3	9.5	0.083	0.529	25.840260	-108.965083
X. C. Los Mochis - Cd. Obregón (Cuota)	29.00	3	2	8542	4.3	84.8	2.2	4.8	2.1	0.8	0.4	0.3	0.3	89.1	2.2	8.7	0.092	0.529	25.840300	-108.965188
San Blas	65.00	1	1	3552	20.9	70.8	2.1	3.9	1.0	0.6	0.6	0.1	0.0	91.7	2.1	6.2	0.094	0.585	26.063045	-108.778457
San Blas	65.00	1	2	3447	19.7	72.4	1.4	4.3	1.1	0.7	0.3	0.1	0.0	92.1	1.4	6.5	0.086	0.585	26.063125	-108.778531
San Blas	65.00	3	1	1883	15.6	74.8	1.4	5.2	1.5	0.7	0.5	0.2	0.1	90.4	1.4	8.2	0.088	0.557	26.139228	-108.736078
San Blas	65.00	3	2	1846	14.7	76.6	1.5	4.1	1.6	0.9	0.3	0.2	0.1	91.3	1.5	7.2	0.088	0.557	26.139295	-108.736087

SINALOA

34 CARR: Topolobampo - Choix

CLAVE: 25032

RUTA: SIN-023

AÑO: 2025

LUGAR	ESTACION				CLASIFICACION VEHICULAR EN PORCIENTO										COORDENADAS					
	KM	TE	SC	TDPA	M	A	B	C2	C3	T3S2	T3S3	T3S2R4	OTROS	A	B	C	K'	D	LATITUD	LONGITUD
El Fuerte	107.70	1	1	2745	17.5	75.7	1.1	3.5	1.2	0.6	0.3	0.1	0.0	93.2	1.1	5.7	0.087	0.523	26.395702	-108.625722
El Fuerte	107.70	1	2	2680	19.0	74.3	1.2	3.4	1.2	0.6	0.2	0.1	0.0	93.3	1.2	5.5	0.089	0.523	26.395737	-108.625801
El Fuerte	107.70	3	0	2759	17.2	76.6	1.2	3.0	1.4	0.3	0.2	0.1	0.0	93.8	1.2	5.0	0.084	0.519	26.422320	-108.605117
Choix	159.00	1	0	1825	15.4	78.0	1.0	2.4	2.0	0.4	0.4	0.3	0.1	93.4	1.0	5.6	0.094	0.529	26.667800	-108.346473

35 CARR: Villa Unión - El Walamo

CLAVE: 25081

RUTA: SIN-081

AÑO: 2025

LUGAR	ESTACION				CLASIFICACION VEHICULAR EN PORCIENTO										COORDENADAS					
	KM	TE	SC	TDPA	M	A	B	C2	C3	T3S2	T3S3	T3S2R4	OTROS	A	B	C	K'	D	LATITUD	LONGITUD
Villa Unión	0.00	3	0	4018	23.0	71.2	1.5	2.4	1.0	0.5	0.2	0.2	0.0	94.2	1.5	4.3	0.081	0.558	23.166757	-106.220815
El Walamo	7.00	1	0	3897	27.3	67.0	1.5	2.4	1.1	0.3	0.2	0.1	0.1	94.3	1.5	4.2	0.074	0.514	23.143898	-106.238024

36 CARR: Villa Unión - Siqueiros

CLAVE: 25063

RUTA: SIN-063

AÑO: 2025

LUGAR	ESTACION				CLASIFICACION VEHICULAR EN PORCIENTO										COORDENADAS					
	KM	TE	SC	TDPA	M	A	B	C2	C3	T3S2	T3S3	T3S2R4	OTROS	A	B	C	K'	D	LATITUD	LONGITUD
Villa Unión	0.00	3	0	3729	19.2	72.7	1.4	2.8	2.2	0.9	0.6	0.1	0.1	91.9	1.4	6.7	0.076	0.581	23.213339	-106.206512
Siqueiros	11.00	1	0	1044	30.0	63.3	1.3	4.5	0.7	0.1	0.1	0.0	0.0	93.3	1.3	5.4	0.093	0.608	23.329741	-106.236461

37 CARR: Culiacán - Las Brisas (Cuota)

CLAVE: 25503

RUTA: SIN-001D

AÑO: 2025

LUGAR	ESTACION				CLASIFICACION VEHICULAR EN PORCIENTO										COORDENADAS					
	KM	TE	SC	TDPA	M	A	B	C2	C3	T3S2	T3S3	T3S2R4	OTROS	A	B	C	K'	D	LATITUD	LONGITUD
T. C. Culiacán - El Dorado	0.00																			
Plaza de Cobro Culiacán	1.50	3	1	6444	4.6	76.0	4.0	4.4	2.8	4.8	1.0	1.9	0.5	80.6	4.0	15.4	0.097	0.563	24.750729	-107.478618
Plaza de Cobro Culiacán	1.50	3	2	5402	4.5	77.0	3.7	4.2	2.8	4.7	0.9	1.8	0.4	81.5	3.7	14.8	0.118	0.563	24.750637	-107.478576
T. C. Libramiento de Culiacán (Cuota)	12.00																			
X. C. Culiacán - Altata	14.70	3	1	4788	5.0	58.0	7.4	6.0	2.5	13.7	2.3	4.1	1.0	63.0	7.4	29.6	0.098	0.604	24.772324	-107.582765
X. C. Culiacán - Altata	14.70	3	2	4734	4.9	57.2	7.2	6.3	3.0	14.1	2.2	4.1	1.0	62.1	7.2	30.7	0.101	0.604	24.772320	-107.582856
T. Der. Caimanero	44.79	1	1	4314	4.3	51.7	7.0	5.4	2.6	19.9	3.0	5.1	1.0	56.0	7.0	37.0	0.108	0.640	24.952396	-107.757518
T. Der. Caimanero	44.79	1	2	3936	4.0	53.4	6.8	5.1	2.6	19.7	2.6	4.8	1.0	57.4	6.8	35.8	0.106	0.640	24.952316	-107.757572
T. Der. Zapotillo	63.36	1	1	4101	3.9	53.9	8.6	6.4	2.2	16.1	3.1	5.0	0.8	57.8	8.6	33.6	0.143	0.717	25.064936	-107.870411
T. Der. Zapotillo	63.36	1	2	4128	3.8	53.5	8.4	6.5	2.3	16.4	3.4	4.7	1.0	57.3	8.4	34.3	0.097	0.717	25.064886	-107.870479
T. Der. Zapotillo	63.36	3	1	3673	5.8	47.4	9.1	7.5	2.6	19.5	2.6	4.7	0.8	53.2	9.1	37.7	0.085	0.532	25.076567	-107.882746
T. Der. Zapotillo	63.36	3	2	3660	5.5	48.2	8.9	7.2	2.8	19.5	2.5	4.7	0.7	53.7	8.9	37.4	0.078	0.532	25.076507	-107.882812

SINALOA

37 CARR: Culiacán - Las Brisas (Cuota)

CLAVE: 25503

RUTA: SIN-001D

AÑO: 2025

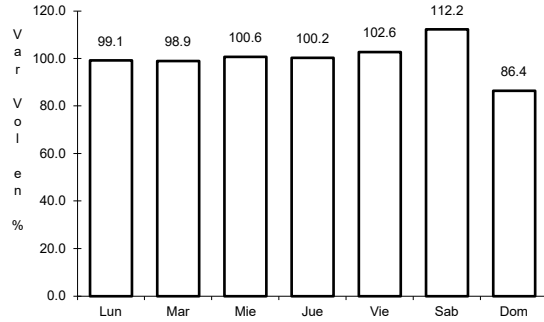
LUGAR	ESTACION				CLASIFICACION VEHICULAR EN PORCIENTO														COORDENADAS	
	KM	TE	SC	TDPA	M	A	B	C2	C3	T3S2	T3S3	T3S2R4	OTROS	A	B	C	K'	D	LATITUD	LONGITUD
X. C. Ramal a La Reforma	110.00	1	1	4133	4.2	45.7	10.2	6.8	2.6	21.2	2.7	5.6	1.0	49.9	10.2	39.9	0.075	0.509	25.389422	-108.123816
X. C. Ramal a La Reforma	110.00	1	2	4364	4.2	45.6	10.5	6.7	2.4	21.3	2.5	5.8	1.0	49.8	10.5	39.7	0.070	0.509	25.389368	-108.123879
T. C. Culiacán - Los Mochis	125.70	1	1	3654	4.8	47.2	8.4	5.4	3.0	21.9	2.5	5.8	1.0	52.0	8.4	39.6	0.075	0.537	25.481051	-108.224840
T. C. Culiacán - Los Mochis	125.70	1	2	3858	4.2	46.8	8.6	5.6	3.4	21.9	2.4	6.2	0.9	51.0	8.6	40.4	0.075	0.537	25.480996	-108.224904



1 CARR: Culiacán - Los Mochis

CLAVE: 25502

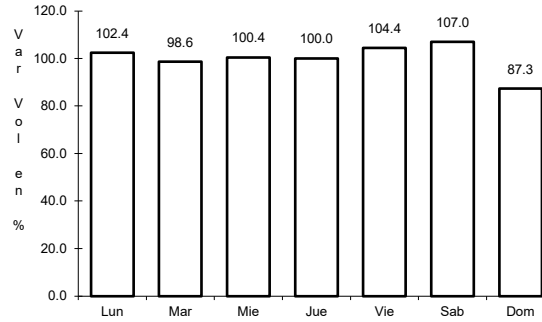
ruta: MEX-015



Km: 4.00

Tipo: 1

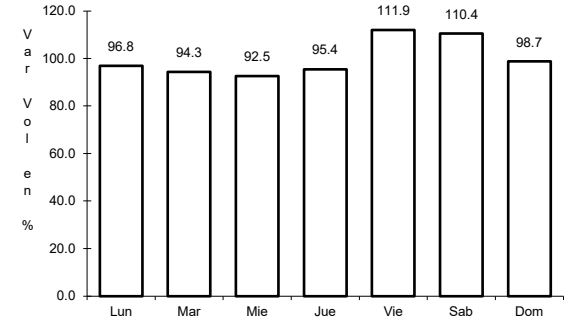
Sent: 1



Km: 4.00

Tipo: 1

Sent: 2



Km: 104.70

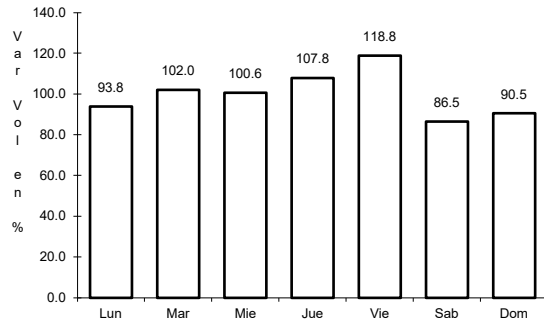
Tipo: 1

Sent: 0

2 CARR: Durango - Villa Unión

CLAVE: 0083

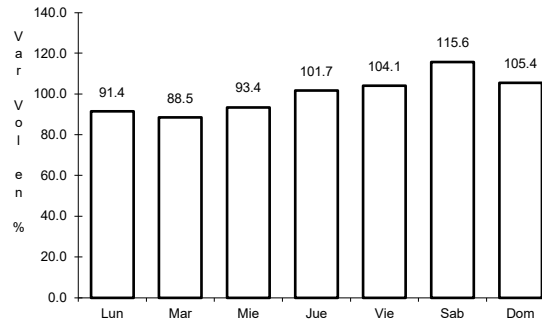
ruta: MEX-040



Km: 0.00

Tipo: 3

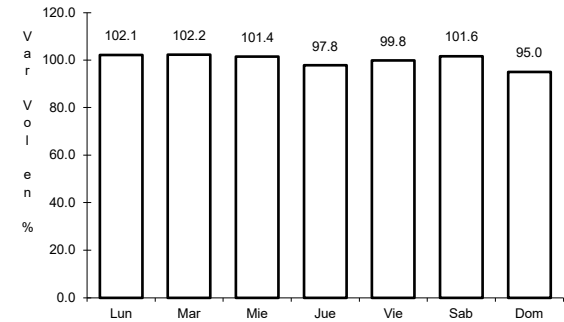
Sent: 0



Km: 145.50

Tipo: 1

Sent: 0



Km: 294.40

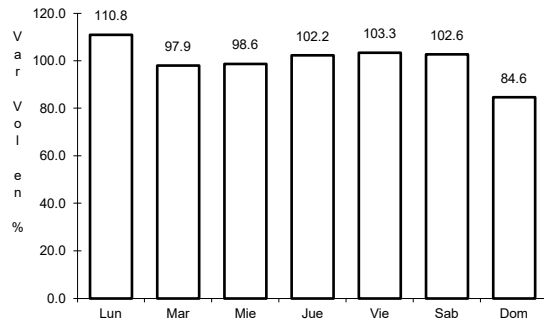
Tipo: 1

Sent: 0

3 CARR: Libramiento de Mazatlán

CLAVE: 25604

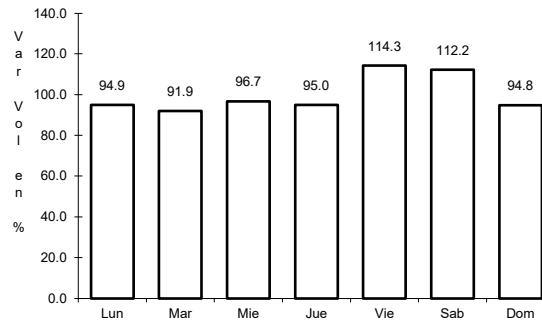
ruta: MEX-015



Km: 0.00

Tipo: 3

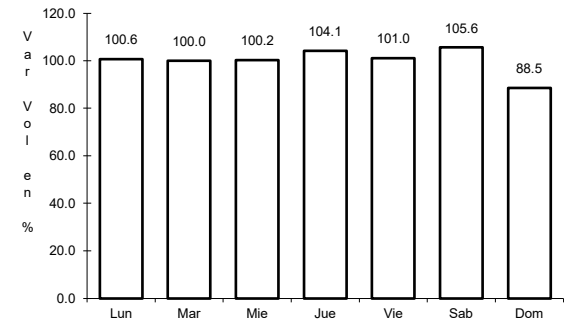
Sent: 1



Km: 0.00

Tipo: 3

Sent: 2



Km: 5.40

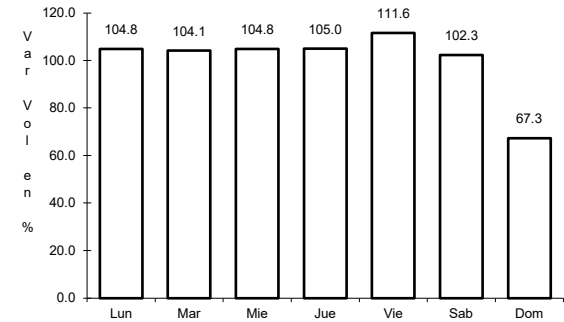
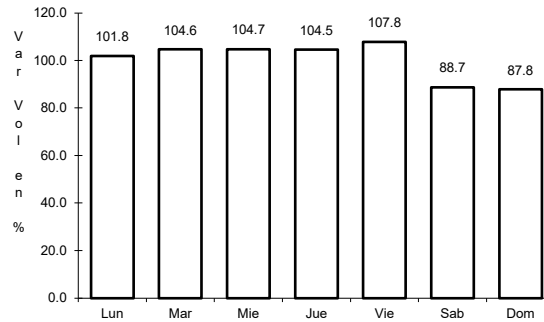
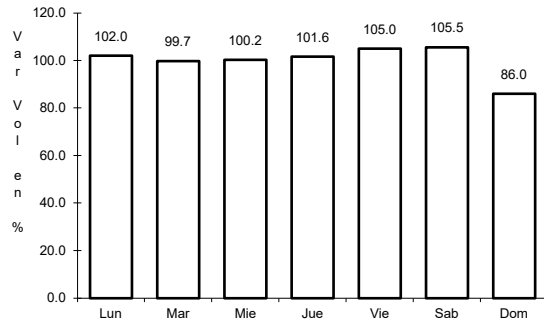
Tipo: 1

Sent: 1

4 CARR: Libramiento Sur de Culiacán

CLAVE: 25500

ruta: MEX-015



Km: 0.00                      Tipo: 3                      Sent: 1

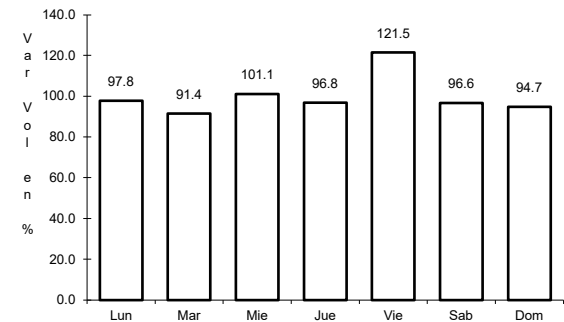
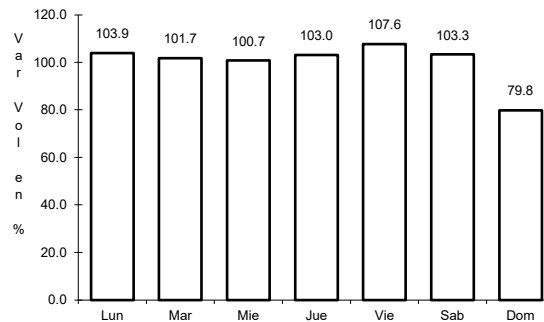
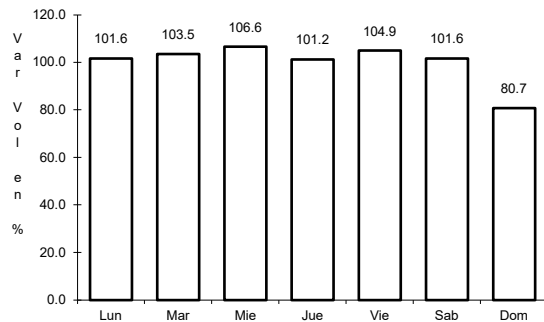
Km: 0.00                      Tipo: 3                      Sent: 2

Km: 8.90                      Tipo: 1                      Sent: 1

5 CARR: Mazatlán - Culiacán

CLAVE: 25501

ruta: MEX-015



Km: 0.82                      Tipo: 1                      Sent: 1

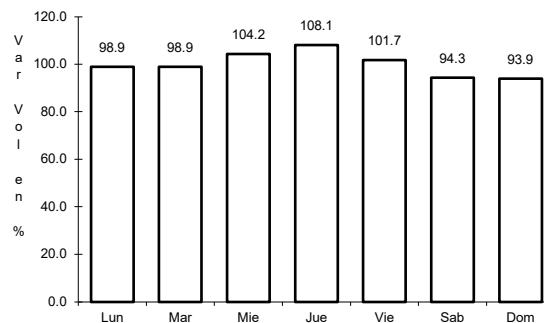
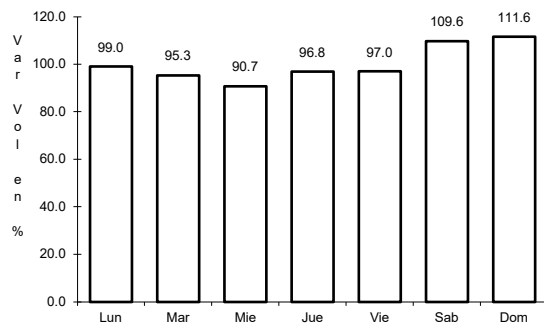
Km: 0.82                      Tipo: 1                      Sent: 2

Km: 105.21                      Tipo: 3                      Sent: 0

6 CARR: Pericos - Los Naranjos

CLAVE: 25598

ruta: MEX-024



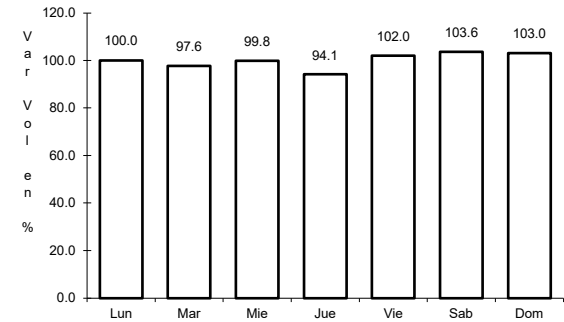
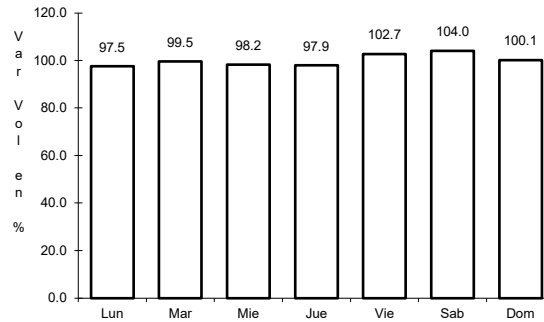
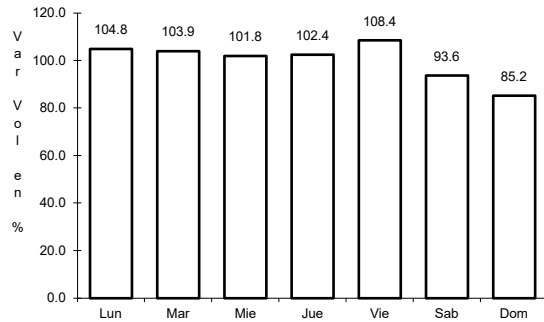
Km: 0.00                      Tipo: 3                      Sent: 0

Km: 37.50                      Tipo: 1                      Sent: 0

7 CARR: Tepic - Mazatlán

CLAVE: 00499

ruta: MEX-015



Km: 0.00                      Tipo: 3                      Sent: 1

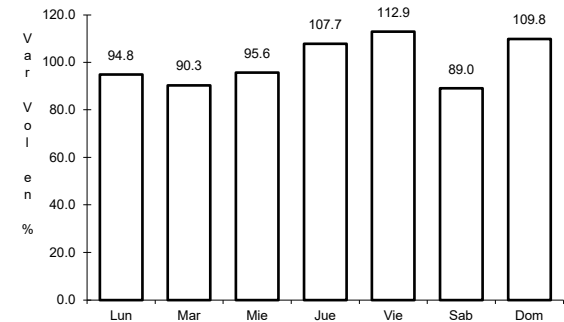
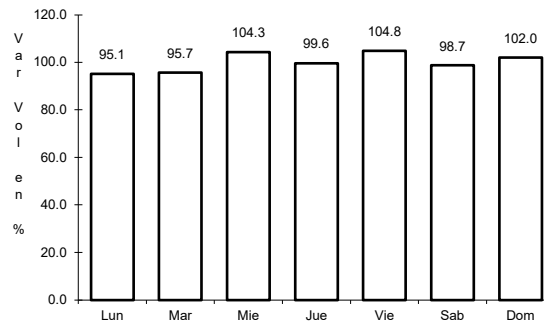
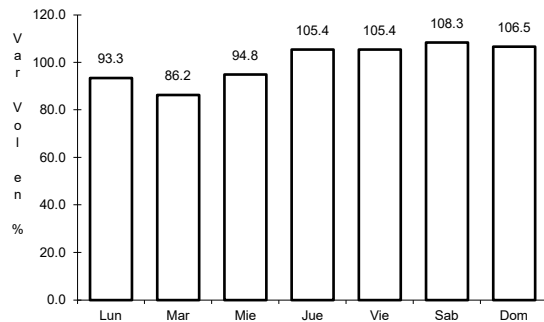
Km: 136.52                      Tipo: 1                      Sent: 0

Km: 267.99                      Tipo: 1                      Sent: 0

8 CARR: Durango - Mazatlán (Cuota)

CLAVE: 00084

ruta: MEX-040D



Km: 21.30                      Tipo: 3                      Sent: 0

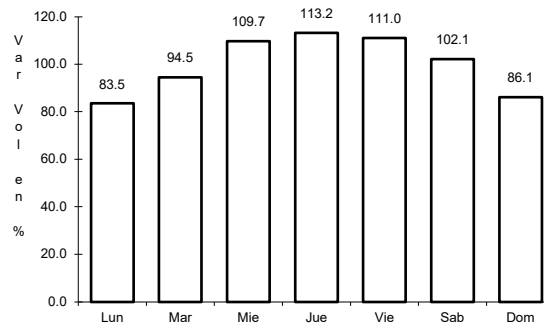
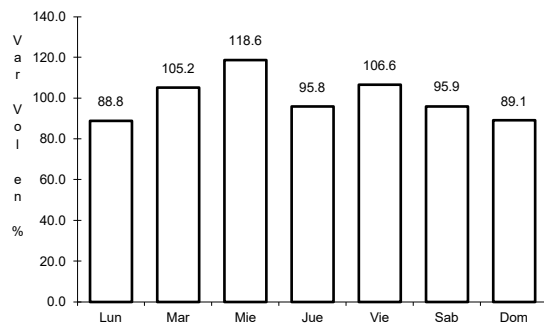
Km: 111.00                      Tipo: 3                      Sent: 0

Km: 229.70                      Tipo: 1                      Sent: 0

9 CARR: Libramiento de Culiacán (Cuota)

CLAVE:

ruta: MEX-015D



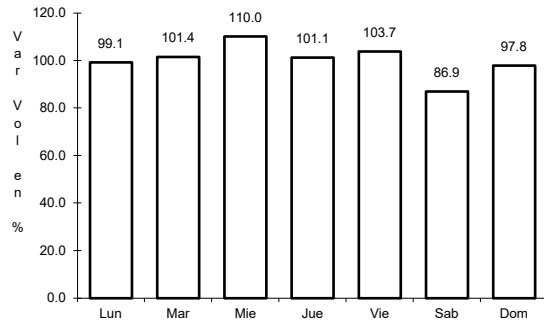
Km: 203.30                      Tipo: 1                      Sent: 1

Km: 203.30                      Tipo: 1                      Sent: 2

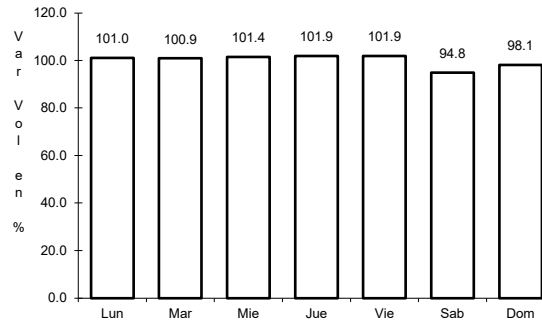
10 CARR: Libramiento de Mazatlán (Cuota)

CLAVE:

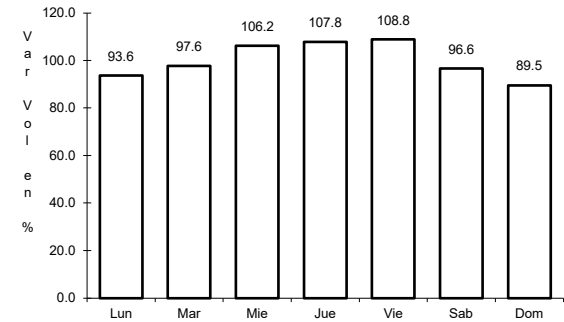
ruta: MEX-015D



Km: 0.00                      Tipo: 3                      Sent: 1



Km: 0.00                      Tipo: 3                      Sent: 2

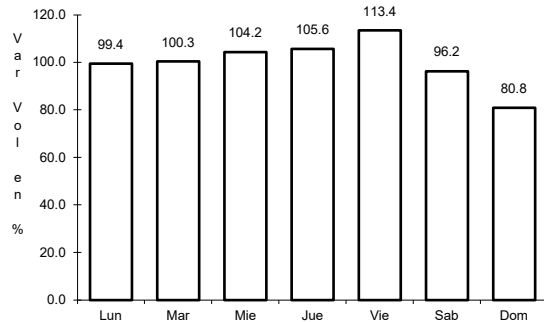


Km: 28.60                      Tipo: 3                      Sent: 1

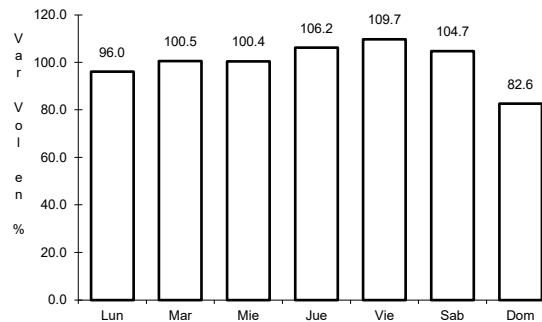
11 CARR: Los Mochis - Cd. Obregón (Cuota)

CLAVE: 26444

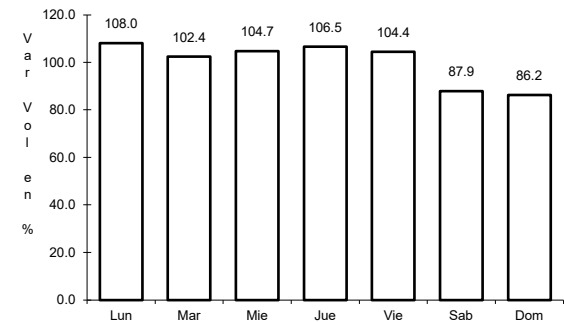
ruta: MEX-015D



Km: 0.00                      Tipo: 3                      Sent: 1



Km: 0.00                      Tipo: 3                      Sent: 2

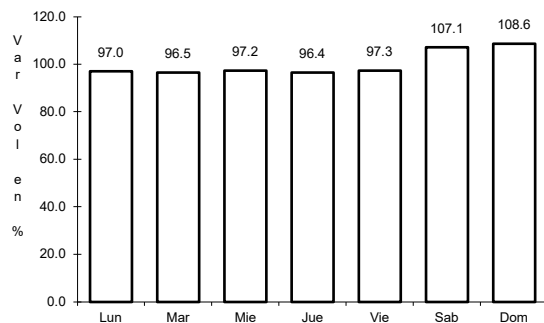


Km: 222.70                      Tipo: 1                      Sent: 1

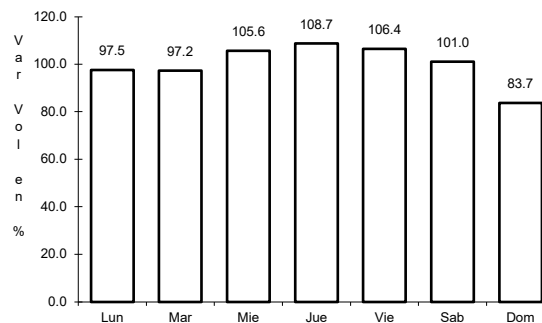
12 CARR: Mazatlán - Culiacán (Cuota)

CLAVE: 25045

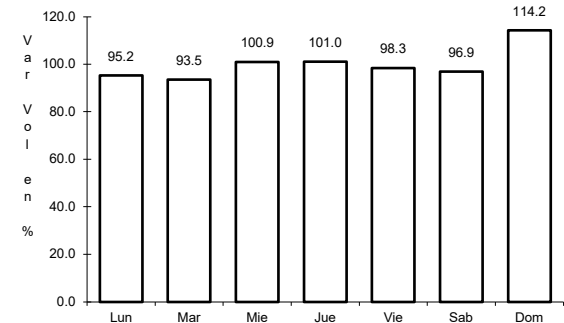
ruta: MEX-015D



Km: 0.00                      Tipo: 3                      Sent: 1



Km: 0.00                      Tipo: 3                      Sent: 2

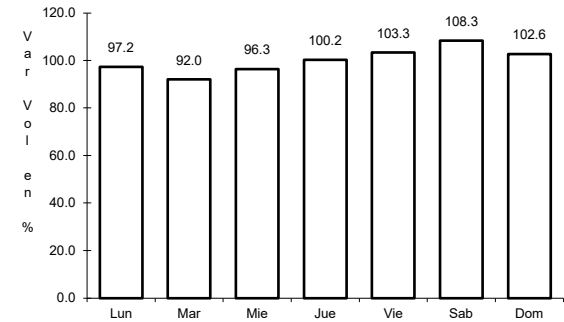
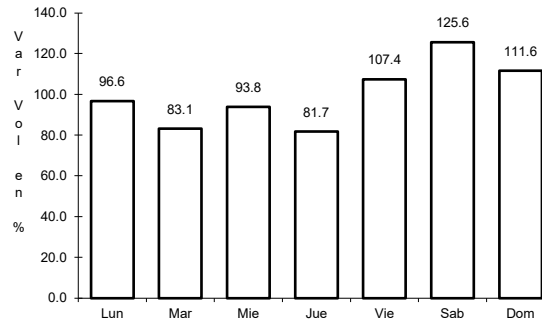
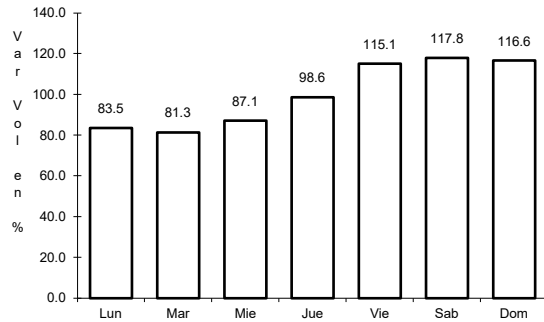


Km: 187.80                      Tipo: 3                      Sent: 1

13 CARR: Tepic - Villa Unión (cuota)

CLAVE: 00500

ruta: MEX-015D



Km: 8.65 Tipo: 1 Sent: 1

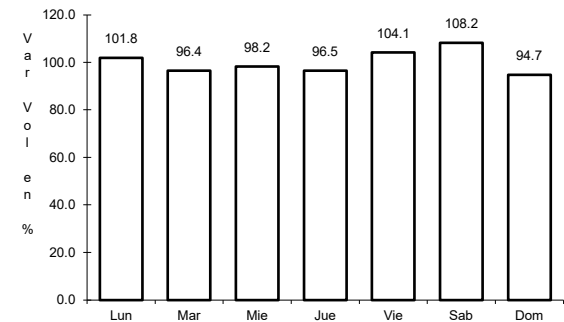
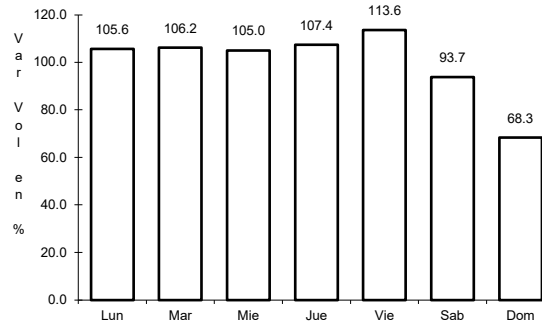
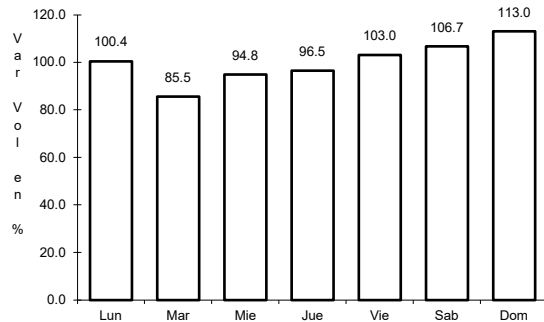
Km: 8.65 Tipo: 1 Sent: 2

Km: 238.50 Tipo: 1 Sent: 0

14 CARR: Carrizal - Campo Aníbal

CLAVE: 25585

ruta: SIN-019



Km: 0.00 Tipo: 3 Sent: 0

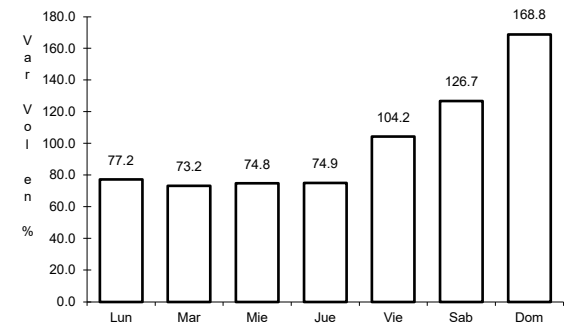
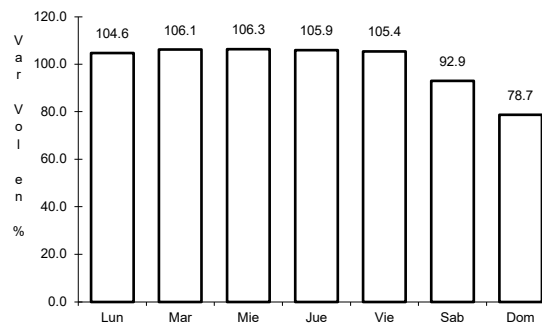
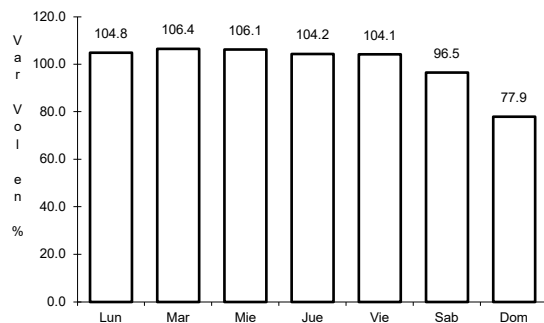
Km: 29.20 Tipo: 1 Sent: 0

Km: 32.00 Tipo: 1 Sent: 0

15 CARR: Culiacán - Altata

CLAVE: 25013

ruta: SIN-030



Km: 6.20 Tipo: 1 Sent: 1

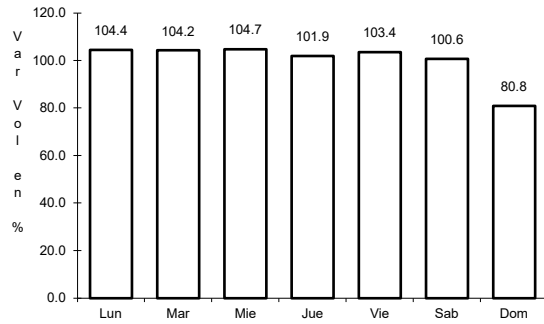
Km: 6.20 Tipo: 1 Sent: 2

Km: 67.00 Tipo: 1 Sent: 1

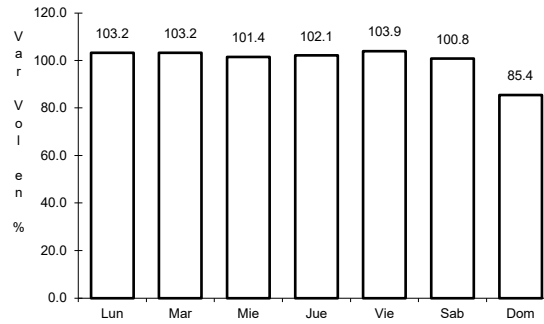
16 CARR: Culiacán - El Dorado

CLAVE: 25044

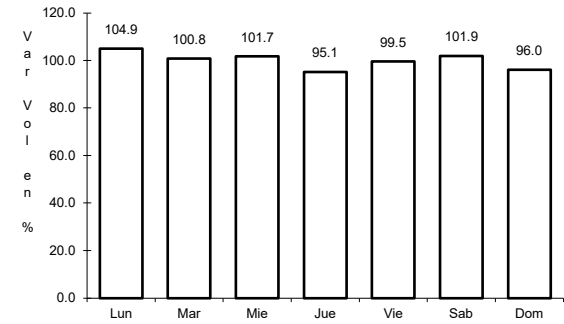
ruta: SIN-005



Km: 0.00                      Tipo: 3                      Sent: 1



Km: 0.00                      Tipo: 3                      Sent: 2

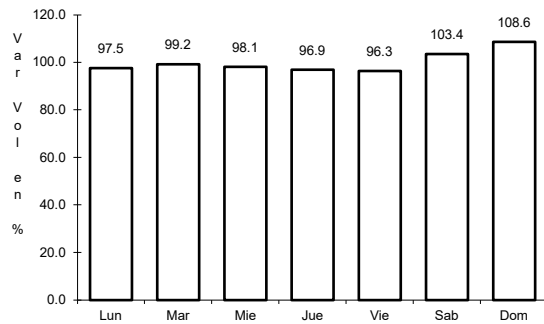


Km: 21.35                      Tipo: 3                      Sent: 0

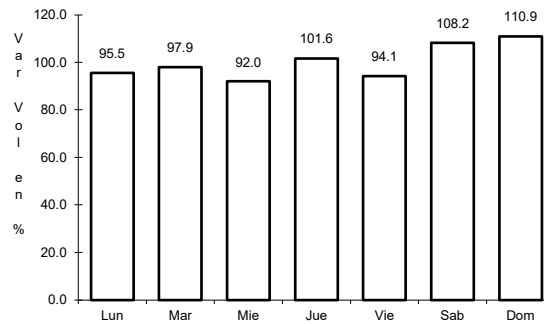
17 CARR: El Limoncito - Cinco Hermanos

CLAVE: 25016

ruta: SIN-016



Km: 0.00                      Tipo: 3                      Sent: 0

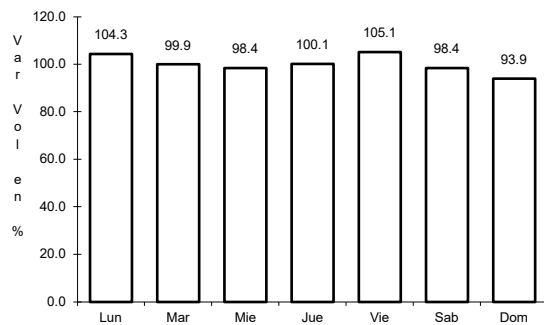


Km: 16.00                      Tipo: 1                      Sent: 0

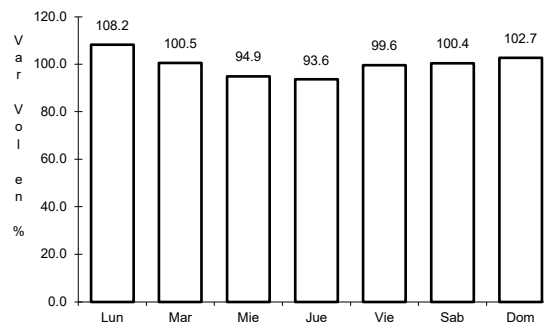
18 CARR: El Salado - El Dorado

CLAVE: 25010

ruta: SIN-010



Km: 0.00                      Tipo: 3                      Sent: 0

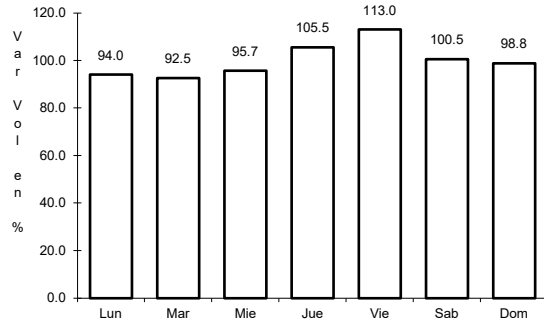


Km: 31.00                      Tipo: 1                      Sent: 0

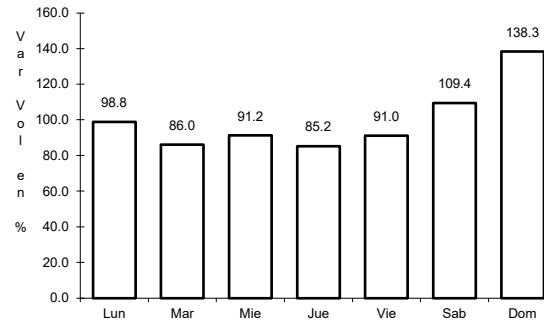
19 CARR: Escuinapa de Hidalgo - Teacapan

CLAVE: 25001

ruta: SIN-001



Km: 0.00      Tipo: 3      Sent: 0

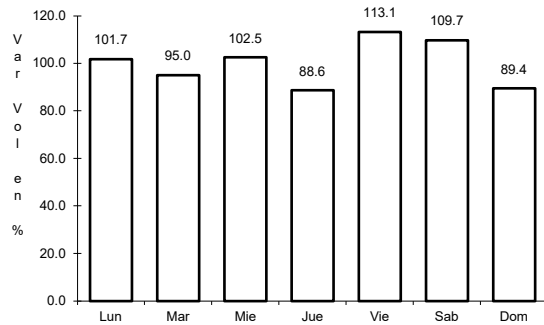


Km: 41.00      Tipo: 1      Sent: 0

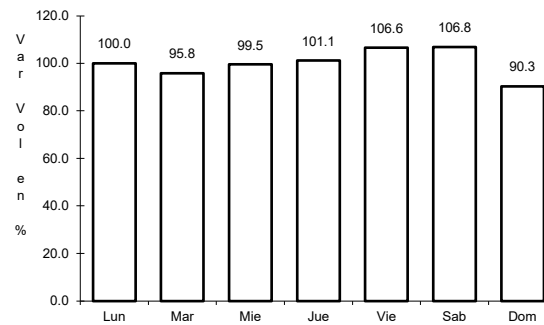
20 CARR: Estación Dimas - San Ignacio

CLAVE: 25007

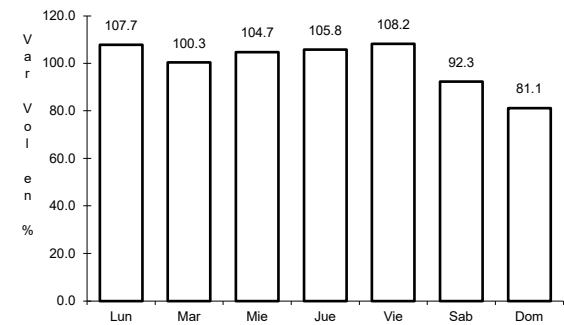
ruta: SIN-006



Km: 23.15      Tipo: 1      Sent: 0



Km: 23.15      Tipo: 3      Sent: 0

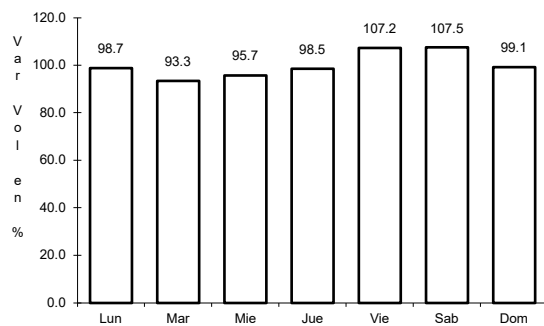


Km: 56.00      Tipo: 1      Sent: 0

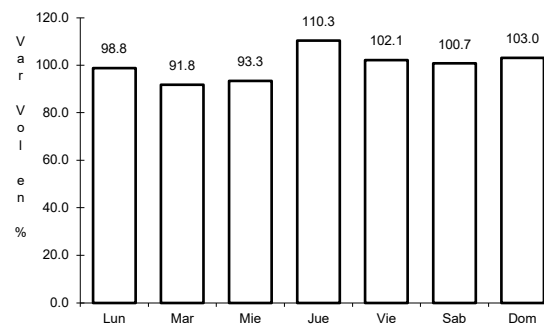
21 CARR: Guamuchil - Mocerito

CLAVE: 25021

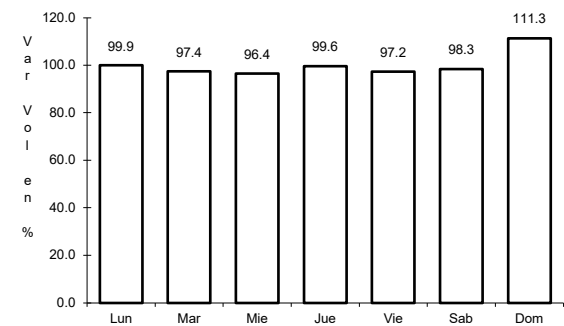
ruta: SIN-021



Km: 0.00      Tipo: 3      Sent: 0



Km: 17.00      Tipo: 1      Sent: 1

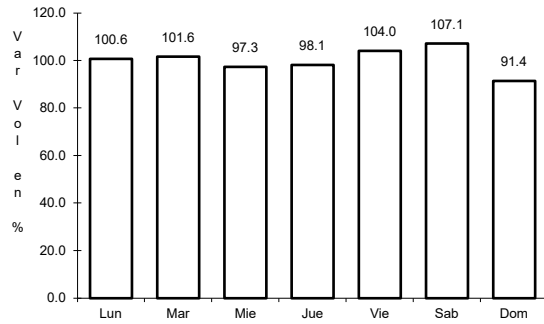


Km: 17.00      Tipo: 1      Sent: 2

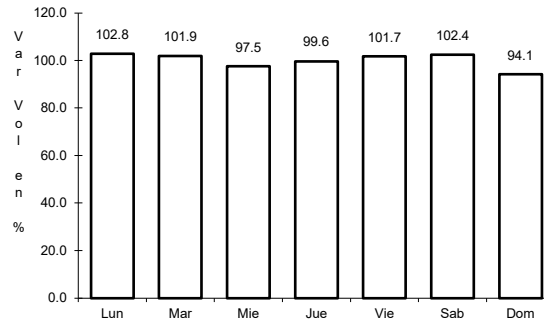
22 CARR: Guasave - Sinaloa de Leyva

CLAVE: 25023

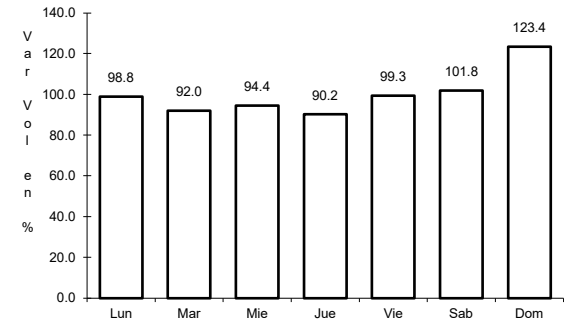
ruta: SIN-023



Km: 1.15                      Tipo: 3                      Sent: 1



Km: 1.15                      Tipo: 3                      Sent: 2

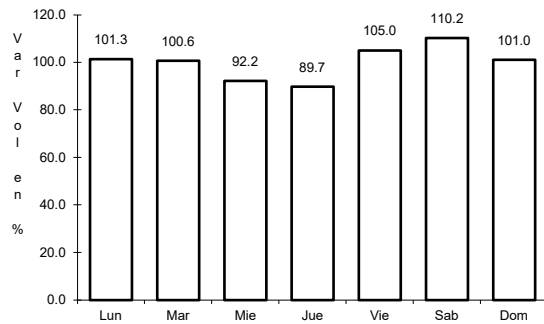


Km: 74.50                      Tipo: 1                      Sent: 1

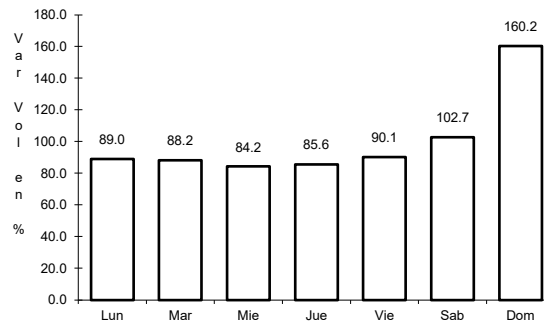
23 CARR: Navolato - El Castillo

CLAVE: 25004

ruta: SIN-004



Km: 0.00                      Tipo: 3                      Sent: 0

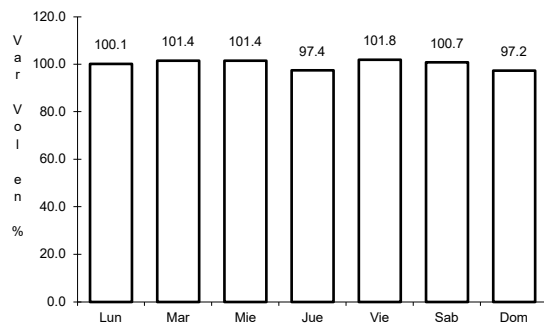


Km: 29.00                      Tipo: 1                      Sent: 0

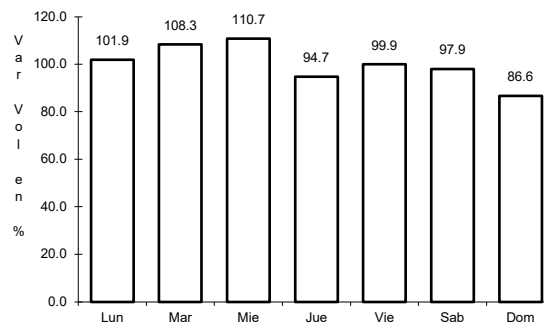
24 CARR: Pozole - Cofradía

CLAVE: 25080

ruta: SIN-080



Km: 0.00                      Tipo: 3                      Sent: 0

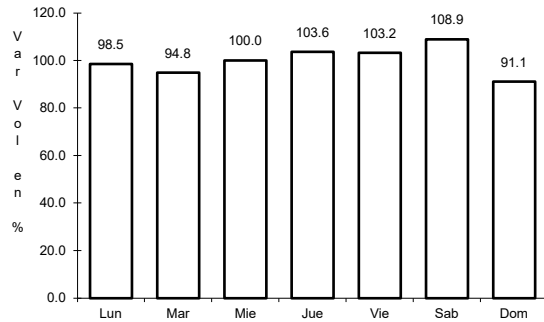


Km: 9.10                      Tipo: 1                      Sent: 0

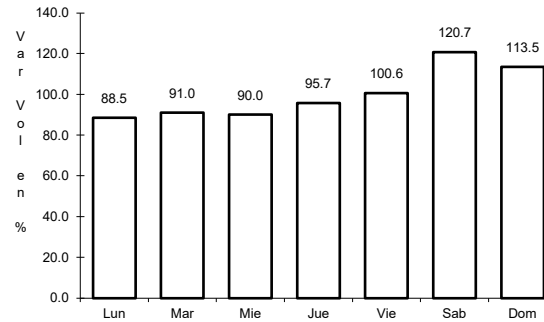
25 CARR: Ramal a Chametla

CLAVE: 25002

ruta: SIN-002



Km: 0.00      Tipo: 3      Sent: 0

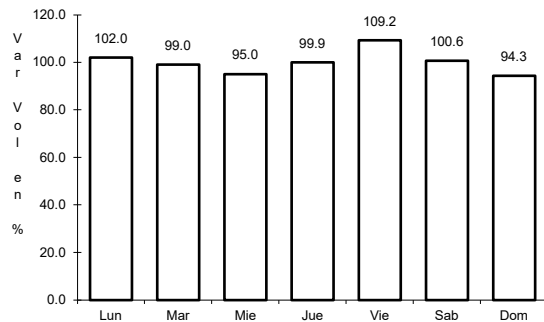


Km: 15.00      Tipo: 1      Sent: 0

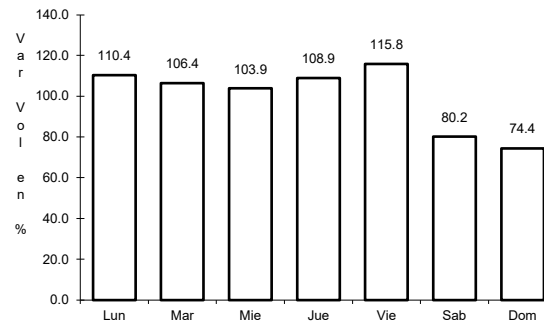
26 CARR: Ramal a Cosalá

CLAVE: 25008

ruta: SIN-008



Km: 0.00      Tipo: 3      Sent: 0

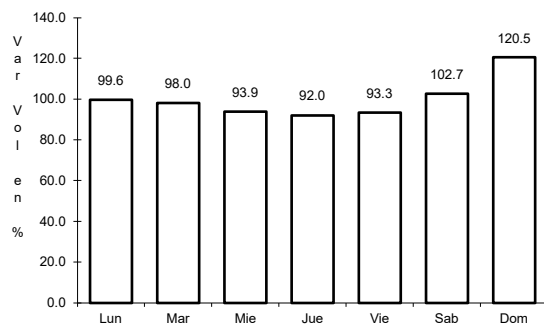


Km: 53.00      Tipo: 1      Sent: 0

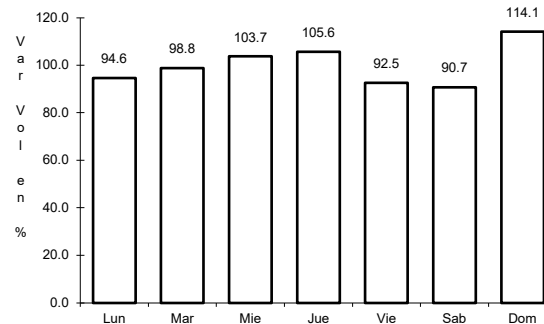
27 CARR: Ramal a El Quelite

CLAVE: 25060

ruta: SIN-060



Km: 0.00      Tipo: 3      Sent: 0

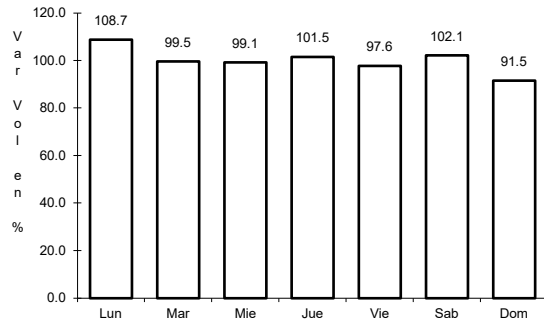


Km: 6.00      Tipo: 1      Sent: 0

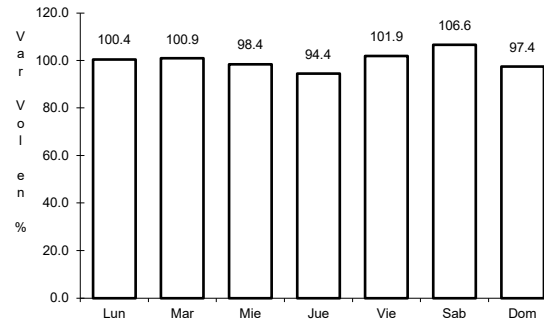
28 CARR: Ramal a Estación Bamoa

CLAVE: 25022

ruta: SIN-022



Km: 0.00                      Tipo: 3                      Sent: 0

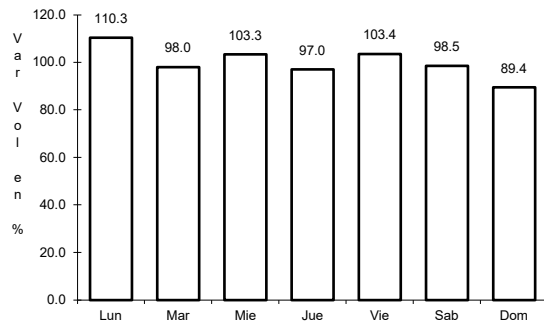


Km: 22.50                      Tipo: 1                      Sent: 0

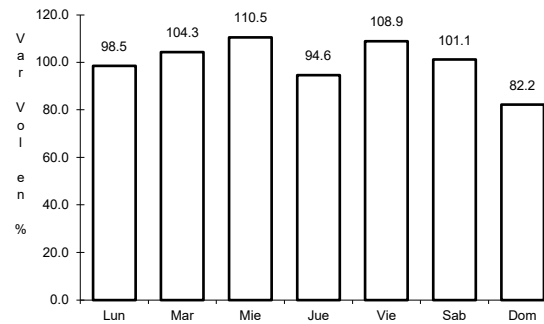
29 CARR: Ramal a La Cruz

CLAVE: 25043

ruta: SIN



Km: 0.00                      Tipo: 3                      Sent: 0

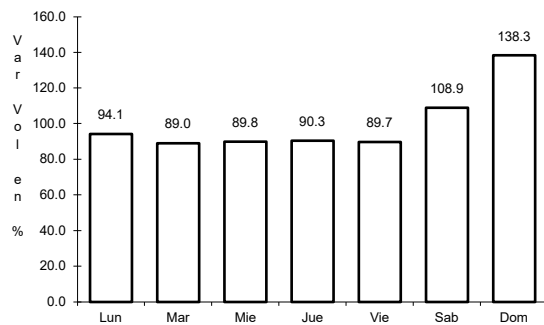


Km: 18.00                      Tipo: 1                      Sent: 0

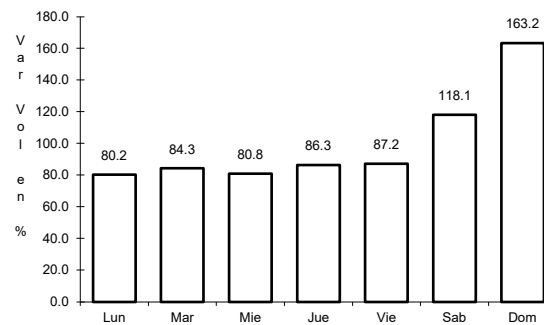
30 CARR: Ramal a La Noria

CLAVE: 25592

ruta: SIN



Km: 0.00                      Tipo: 3                      Sent: 0

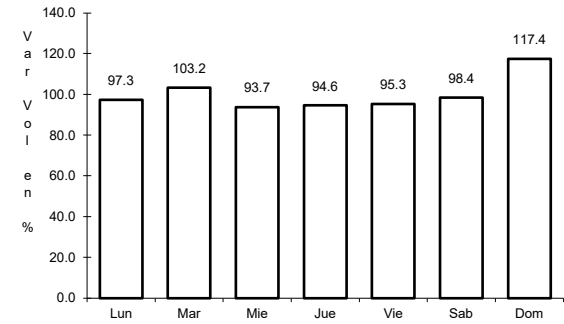
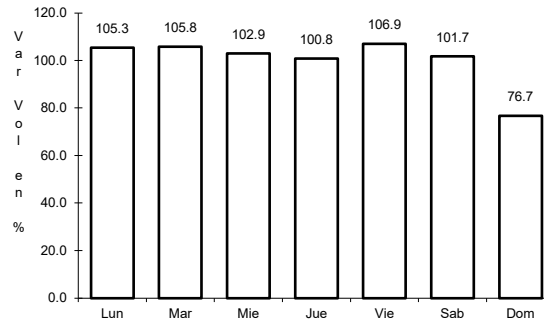
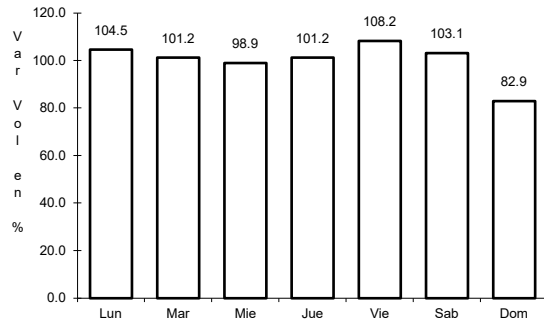


Km: 25.50                      Tipo: 1                      Sent: 0

31 CARR: Ramal a La Reforma

CLAVE: 25041

ruta: SIN-004



Km: 0.00                      Tipo: 3                      Sent: 0

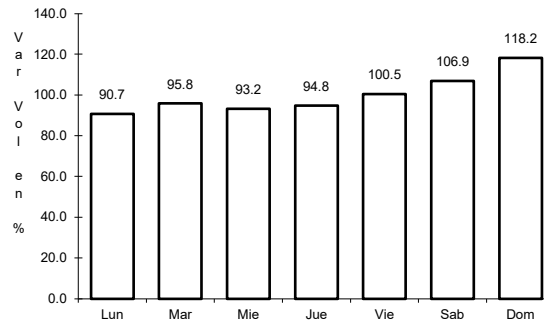
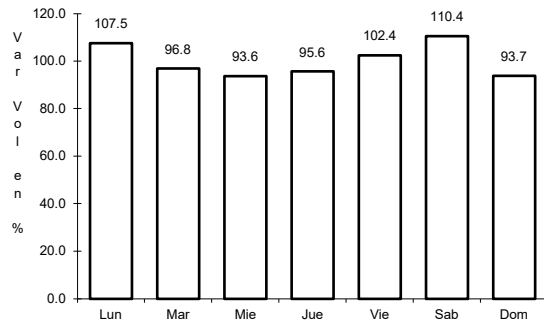
Km: 14.00                      Tipo: 3                      Sent: 0

Km: 60.00                      Tipo: 1                      Sent: 0

32 CARR: Rosario - Caimanero

CLAVE: 25003

ruta: SIN-003



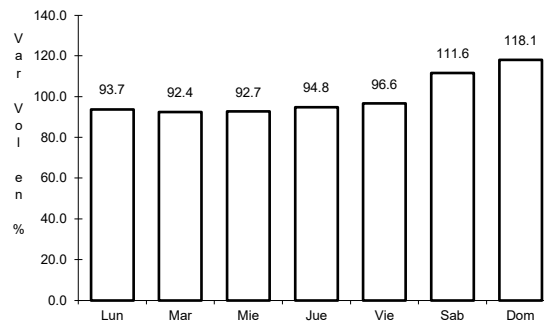
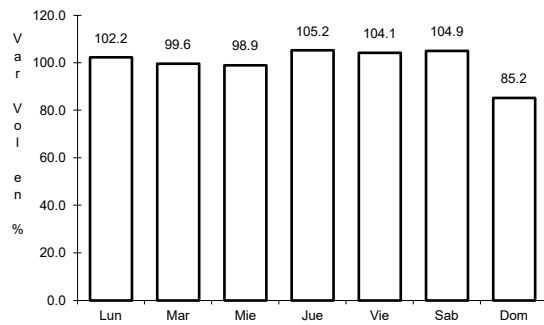
Km: 0.00                      Tipo: 3                      Sent: 0

Km: 30.00                      Tipo: 1                      Sent: 0

33 CARR: San Pedro - Campo Aníbal

CLAVE: 25600

ruta: SIN



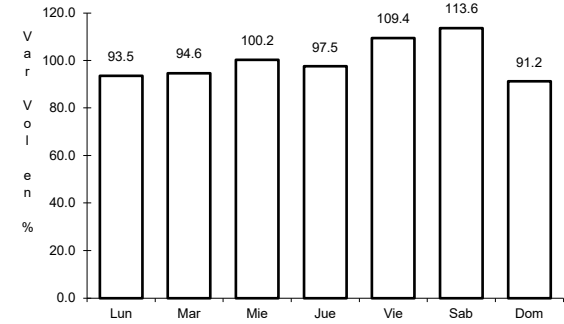
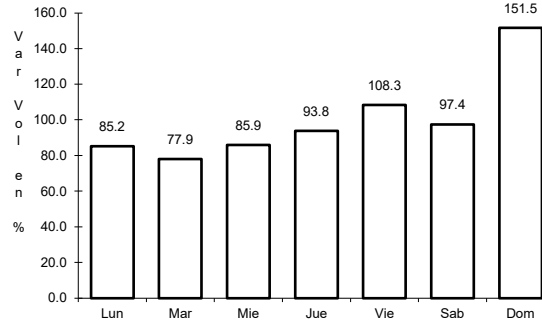
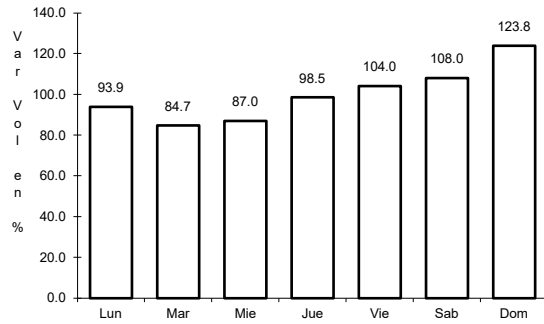
Km: 0.00                      Tipo: 3                      Sent: 0

Km: 24.50                      Tipo: 1                      Sent: 0

34 CARR: Topolobampo - Choix

CLAVE: 25032

ruta: SIN-023



Km: 0.00      Tipo: 3      Sent: 1

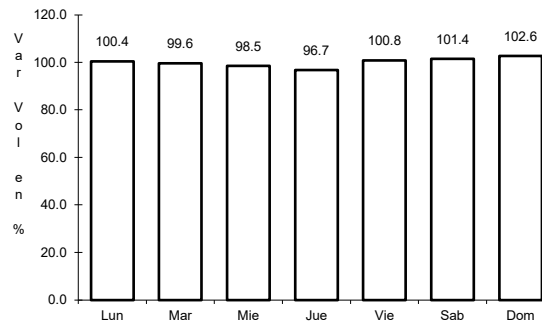
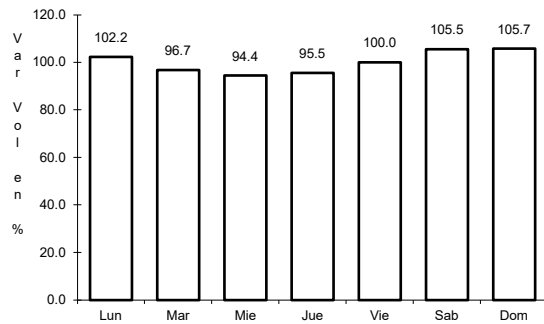
Km: 0.00      Tipo: 3      Sent: 2

Km: 159.00      Tipo: 1      Sent: 0

35 CARR: Villa Unión - El Walamo

CLAVE: 25081

ruta: SIN-081



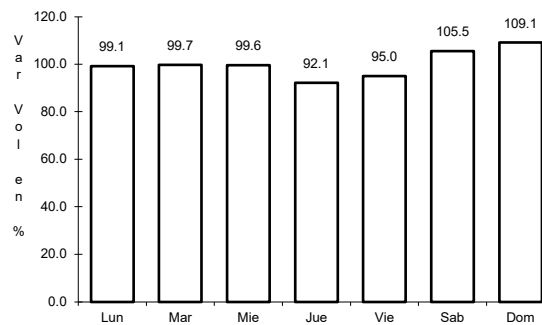
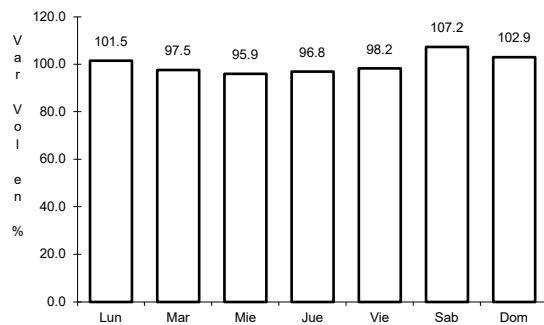
Km: 0.00      Tipo: 3      Sent: 0

Km: 7.00      Tipo: 1      Sent: 0

36 CARR: Villa Unión - Siqueiros

CLAVE: 25063

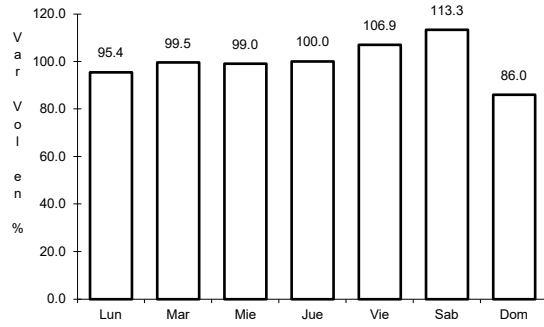
ruta: SIN-063



Km: 0.00      Tipo: 3      Sent: 0

Km: 11.00      Tipo: 1      Sent: 0

37 CARR: Culiacán - Las Brisas (Cuota)

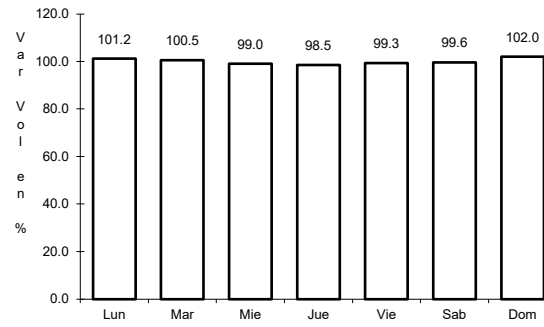


Km: 1.50

Tipo: 3

Sent: 1

CLAVE: 25503

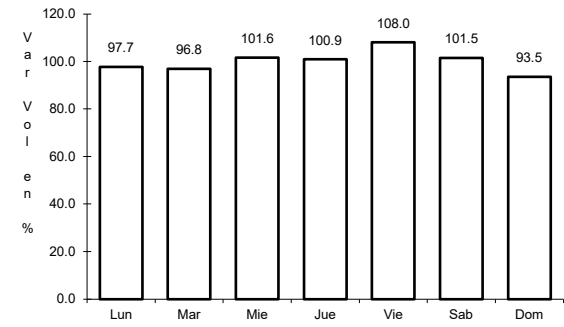


Km: 1.50

Tipo: 3

Sent: 2

RUTA: SIN-001D



Km: 125.70

Tipo: 1

Sent: 1

